


Test Report

ID: RA0034377(2)

Date: 2023-10-18

Page 1 of 85

Application ID : JA0029001(1)
 Applicant : The Pencil Grip.Inc.
 21200 Superior St. Suite A Chatsworth, CA 91311

Sample : One (1) group of submitted sample(s) stated to be:
 Sample Description : Refer to next page
 Sample/Style No. : Refer to next page
 Country of Sale : USA
 Labeled Age Grade : Not specified
 Age Grade for testing : 3+

Date of Receiving : 2023-8-31, 2023-9-21
 Testing Period : 2023-9-14 to 2023-9-26

*****FOR FURTHER DETAILS, PLEASE REFER TO THE FOLLOWING PAGE(S)*****

SIGN FOR AND ON BEHALF OF
 UNITEC LABORATORY SERVICES (DONGGUAN) LTD.

XINLEI DU
 LABORATORY MANAGER





Item #	Description
TPG-601	Kwik Stix 6 Pack -Classic Colors
TPG-613	Kwik Stix 6 Pack - Metalix Colors
TPG-610	Kwik Stix 6 Pack - Neon Colors
TPG-676	Kwik Stix 6 Pack - Earth Tones
TPG-678	Kwik Stix 10 Pack - Jewel Tones
TPG-680	Kwik Stix 10 Pack - Pastel
TPG-602	Kwik Stix 12 Pack - Classic Colors
TPG-614	Kwik Stix 12 Pack - Metalix
TPG-604	Kwik Stix - 24 Pack
TPG-681	Kwik Stix 30 Pack
TPG-690	Kwik Stix 60 Pack-Master Art Set
TPG-672	Kwik Stix 14 Pack Global Skin Tone
TPG-674	Kwi Stix 72 Pack-Global Skin Tone
TPG-626	Kwik Stix Class Pack 72 set neon
TPG-629	Kwik Stix Class Pack 72 set metalix
TPG-696	Kwik Stix Class Pack 96 set classic
TPG-644	Kwik Stix Class Pack 144 set classic
TPG-60010	Individual Colored Kwik Stix, 12 Count Box - Black
TPG-60020	Individual Colored Kwik Stix, 12 Count Box - Red
TPG-60030	Individual Colored Kwik Stix, 12 Count Box- Dark blue
TPG-60040	Individual Colored Kwik Stix, 12 Count Box -Dark Green
TPG-60050	Individual Colored Kwik Stix, 12 Count Box- purple
TPG-60070	Individual Colored Kwik Stix, 12 Count Box- light blue
TPG-60080	Individual Colored Kwik Stix, 12 Count Box -orange
TPG-60090	Individual Colored Kwik Stix, 12 Count Box- white
TPG-60060	Individual Colored Kwik Stix, 12 Count Box -yellow
TPG-607	Thin Stix 6 pack classic
TPG-619	Thin Stix 6 pack metalix
TPG-616	Thin Stix 6 Pack neon
TPG-608	Thin Stix, Set of 12 Classic Colors
TPG-620	Thin Stix, Set of 24
TPG-699	10 Pack of Rainbow Colors including Black, white and gold
TPG-698	96 Pack of Rainbow colors



<u>TEST REQUEST</u>		<u>RESULT</u>
A)	AS REQUESTED BY THE APPLICANT, TO PERFORM MECHANICAL AND PHYSICAL TEST IN ACCORDANCE WITH U.S. CFR TITLE 16 (CPSC REGULATIONS) PART 1500.50.	PASS
B)	AS REQUESTED BY THE APPLICANT, TO PERFORM FLAMMABILITY TEST(S) OF SUBMITTED SAMPLE(S) IN ACCORDANCE WITH U.S. CFR TITLE 16 (CPSC REGULATIONS), PART 1500.44.	PASS
C)	AS REQUESTED BY THE APPLICANT, TO PERFORM TRACKING LABEL EVALUATION OF SUBMITTED SAMPLE(S) IN ACCORDANCE WITH U.S. CONSUMER PRODUCT SAFETY IMPROVEMENT ACT OF 2008, SECTION 103.	REFER TO NEXT PAGES
D)	AS REQUESTED BY THE APPLICANT, TO PERFORM MARKING AND LABEL EVALUATION OF SUBMITTED SAMPLE(S) IN ACCORDANCE WITH F.P. & L. ACT (16 CFR 500) / NIST UNIFORM LAWS AND REGULATIONS HANDBOOK 130 AND COUNTRY OF ORIGIN MARKING - US REGULATIONS/ 19 CFR 134.11.	PASS
E)	AS REQUESTED BY THE APPLICANT, TO DETERMINE TOTAL LEAD CONTENT IN THE SUBSTRATE OF SUBMITTED SAMPLE(S) IN ACCORDANCE WITH U.S. CONSUMER PRODUCT SAFETY IMPROVEMENT ACT OF 2008, SECTION 101 AND U.S. CALIFORNIA PROPOSITION 65..	PASS
F)	AS REQUESTED BY THE APPLICANT, TO DETERMINE TOTAL LEAD CONTENT IN PAINT / SIMILAR SURFACE COATING OF SUBMITTED SAMPLE(S) IN ACCORDANCE WITH U.S. CONSUMER PRODUCT SAFETY IMPROVEMENT ACT OF 2008, SECTION 101 AND U.S. CALIFORNIA PROPOSITION 65.	PASS
G)	AS REQUESTED BY THE APPLICANT, TO DETERMINE TOTAL CADMIUM CONTENT OF SUBMITTED SAMPLE(S) IN ACCORDANCE WITH U.S. CALIFORNIA PROPOSITION 65.	PASS
H)	AS REQUESTED BY THE APPLICANT, TO DETERMINE PHTHALATES CONTENT OF SUBMITTED SAMPLE(S) IN ACCORDANCE WITH 16 CFR PART 1307 - PROHIBITION OF CHILDREN'S TOYS AND CHILD CARE ARTICLES CONTAINING SPECIFIED PHTHALATES AND U.S. CALIFORNIA PROPOSITION 65.	PASS
I)	AS REQUESTED BY THE APPLICANT, TO DETERMINE LEAD, CADMIUM, MERCURY AND HEXAVALENT CHROMIUM CONTENT OF THE SUBMITTED SAMPLE(S) IN ACCORDANCE WITH US MODEL TOXICS IN PACKAGING LEGISLATION(TPCH: TOXICS IN PACKAGING CLEARINGHOUSE) (FORMERLY DRAFTED BY CONEG).	PASS

Test Report

ID: RA0034377(2)

Date: 2023-10-18

Page 4 of 85

Test Result(s):

A) 16 CFR Part 1500.50 - Mechanical and Physical Test

As Per U.S. Code of Federal Regulations Title 16 Part 1500.50, the Hazards of Sharp Points, Sharp Edges and Small Parts are assessed both before and after applicable use and abuse tests.

Solid Tempera Paint (14 Global Skin Tones, 60 Washable Colors, 24 Vibrant Colors)

Test Item(s)	FHSA	No. of Sample Tested	Sharp Point (1500.48)	Sharp Edge (1500.49)	Small Part (1501)
As Received		3	Pass	Pass	NA
Impact	Section 1500.53(b)	1	Pass	Pass	NA
Bite	Section 1500.53(c)	0	NA	NA	NA
Flexure	Section 1500.53(d)	0	NA	NA	NA
Torque	Section 1500.53(e)	1	Pass	Pass	NA
Tension	Section 1500.53(f)	1	Pass	Pass	NA
Compression	Section 1500.53(g)	0	NA	NA	NA

Note: NA = Not Applicable.

B) 16 CFR Part 1500.44 - Flammability Test

As per U.S. Code of Federal Regulations Title 16 Part 1500.44 for Rigid and Pliable Solids.

Sample	Burning Rate (inch/sec.)	Limit (inch/sec.)
Solid Tempera Paint (14 Global Skin Tones, 60 Washable Colors, 24 Vibrant Colors)	Did Not Ignite	0.10

Note: The submitted sample was tested, the above result only showed the most severe burning rate of the samples.

C) CPSIA - Tracking Label Evaluation

As per U.S. Consumer Product Safety Improvement Act of 2008(CPSIA), Section 103.

Solid Tempera Paint (14 Global Skin Tones), Solid Tempera Paint (60 Washable Colors)

Basic Information	Observation Result	Location		
Manufacturer Name	Present	<input checked="" type="checkbox"/> Packaging	<input checked="" type="checkbox"/> Product	<input type="checkbox"/> Missed
Production Location	Present	<input checked="" type="checkbox"/> Packaging	<input checked="" type="checkbox"/> Product	<input type="checkbox"/> Missed
Production Date	Present	<input checked="" type="checkbox"/> Packaging	<input checked="" type="checkbox"/> Product	<input type="checkbox"/> Missed
Cohort Information	Present	<input checked="" type="checkbox"/> Packaging	<input checked="" type="checkbox"/> Product	<input type="checkbox"/> Missed



Test Report

ID: RA0034377(2)

Date: 2023-10-18

Page 5 of 85

Solid Temperra Paint (24 Vibrant Colors)

Basic Information	Observation Result	Location		
Manufacturer Name	Present	<input checked="" type="checkbox"/> Packaging	<input type="checkbox"/> Product	<input type="checkbox"/> Missed
Production Location	Present	<input checked="" type="checkbox"/> Packaging	<input type="checkbox"/> Product	<input type="checkbox"/> Missed
Production Date	Present	<input checked="" type="checkbox"/> Packaging	<input type="checkbox"/> Product	<input type="checkbox"/> Missed
Cohort Information	Present	<input checked="" type="checkbox"/> Packaging	<input type="checkbox"/> Product	<input type="checkbox"/> Missed

Remark: Tracking label is present on the packaging as per the regulation.

D) Marking and Labeling Review

Review items	Result
F.P. & L. Act (16 CFR 500) / NIST Uniform Laws and Regulations Handbook 130	Meet
Country of Origin Marking - US Regulations/ 19 CFR 134.11	Meet

E) Total Lead in Accessible Substrate Materials

With reference to CPSC-CH-E1002-08.3, analysis was performed by Inductively Coupled Plasma Optical Emission Spectrometer (ICP-OES).

Test Item	Total Lead (Pb)	---
Method Detection Limit (mg/kg)	2	---
CPSIA / Cal. Prop 65 Limits (mg/kg)	100	---
Test Part Description	Result (mg/kg)	Comment
No.1 Coffee plastic shell (14 Global Skin Tones) Dark coffee plastic shell (14 Global Skin Tones) Brown plastic shell (14 Global Skin Tones)	ND	Pass
No.2 Light brown plastic shell (14 Global Skin Tones) Dark brown plastic shell (14 Global Skin Tones) Light coffee plastic shell (14 Global Skin Tones)	ND	Pass
No.3 Dark apricot plastic shell (14 Global Skin Tones) Apricot plastic shell (14 Global Skin Tones) Dark wheat plastic shell (14 Global Skin Tones)	ND	Pass
No.4 Wheat plastic shell (14 Global Skin Tones) Bright apricot plastic shell (14 Global Skin Tones) Light apricot plastic shell (14 Global Skin Tones)	ND	Pass



Test Report

ID: RA0034377(2)

Date: 2023-10-18

Page 6 of 85

Test Item		Total Lead (Pb)	---
Method Detection Limit (mg/kg)		2	---
CPSIA / Cal. Prop 65 Limits (mg/kg)		100	---
Test Part Description		Result (mg/kg)	Comment
No.5	Pale yellow plastic shell (14 Global Skin Tones) Light pale yellow plastic shell (14 Global Skin Tones) Transparent plastic shell (14 Global Skin Tones)	ND	Pass
No.6	Prussian blue plastic shell (60 Washable Colors) Light yellow plastic shell (60 Washable Colors) Green black plastic shell (60 Washable Colors, 24 Vibrant Colors)	ND	Pass
No.7	Dark blue plastic shell (60 Washable Colors, 24 Vibrant Colors) Rose plastic shell (60 Washable Colors, 24 Vibrant Colors) Purple plastic shell (60 Washable Colors, 24 Vibrant Colors)	ND	Pass
No.8	Light blue plastic shell (60 Washable Colors, 24 Vibrant Colors) Light green plastic shell (60 Washable Colors, 24 Vibrant Colors) Buff plastic shell (60 Washable Colors, 24 Vibrant Colors)	ND	Pass
No.9	Yellow plastic shell (60 Washable Colors) Orange plastic shell (60 Washable Colors, 24 Vibrant Colors) Red plastic shell (60 Washable Colors, 24 Vibrant Colors)	ND	Pass
No.10	Black plastic shell (60 Washable Colors, 24 Vibrant Colors) White plastic shell (60 Washable Colors, 24 Vibrant Colors) Brown plastic shell (60 Washable Colors, 24 Vibrant Colors)	ND	Pass
No.11	Pale purple plastic shell (60 Washable Colors) Earth yellow plastic shell (60 Washable Colors) Orange-yellow plastic shell (60 Washable Colors)	ND	Pass
No.12	Lake blue plastic shell (60 Washable Colors) Grass green plastic shell (60 Washable Colors) Dark green plastic shell (60 Washable Colors)	ND	Pass
No.13	Rose-bengal plastic shell (60 Washable Colors) Dark red plastic shell (60 Washable Colors) Turquoise plastic shell (60 Washable Colors)	ND	Pass
No.14	Fluorescent orange plastic shell (60 Washable Colors, 24 Vibrant Colors) Fluorescent red plastic shell (60 Washable Colors, 24 Vibrant Colors) Fluorescent green plastic shell (60 Washable Colors, 24 Vibrant Colors)	ND	Pass



Test Report

ID: RA0034377(2)

Date: 2023-10-18

Page 7 of 85

Test Item		Total Lead (Pb)	---
Method Detection Limit (mg/kg)		2	---
CPSIA / Cal. Prop 65 Limits (mg/kg)		100	---
Test Part Description		Result (mg/kg)	Comment
No.15	Fluorescent yellow plastic shell (60 Washable Colors, 24 Vibrant Colors) Fluorescent purple plastic shell (60 Washable Colors, 24 Vibrant Colors) Fluorescent blue plastic shell (60 Washable Colors, 24 Vibrant Colors)	ND	Pass
No.16	Sky blue plastic shell (60 Washable Colors) White yellow plastic shell (60 Washable Colors) Light purple plastic shell (60 Washable Colors)	ND	Pass
No.17	Grayish purple plastic shell (60 Washable Colors) Cadet gray plastic shell (60 Washable Colors) Soft green plastic shell (60 Washable Colors)	ND	Pass
No.18	Light grayish blue plastic shell (60 Washable Colors) Apple green plastic shell (60 Washable Colors) Pea green plastic shell (60 Washable Colors)	ND	Pass
No.19	Napoli yellow plastic shell (60 Washable Colors) Cosmos bipinnatus yellow plastic shell (60 Washable Colors) Crape myrtle pink plastic shell (60 Washable Colors)	ND	Pass
No.20	Pale grey plastic shell (60 Washable Colors) Olive green plastic shell (60 Washable Colors) Ochre plastic shell (60 Washable Colors)	ND	Pass
No.21	Blue plastic shell (60 Washable Colors) Flesh plastic shell (60 Washable Colors) Sand red plastic shell (60 Washable Colors)	ND	Pass
No.22	Metallic white plastic shell (60 Washable Colors) Metallic black plastic shell (60 Washable Colors) Metallic red plastic shell (60 Washable Colors)	ND	Pass
No.23	Metallic green plastic shell (60 Washable Colors, 24 Vibrant Colors) Metallic blue plastic shell (60 Washable Colors, 24 Vibrant Colors) Metallic purple plastic shell (60 Washable Colors, 24 Vibrant Colors)	ND	Pass
No.24	Metallic rose plastic shell (60 Washable Colors, 24 Vibrant Colors) Metallic silvery plastic shell (60 Washable Colors, 24 Vibrant Colors) Metallic golden plastic shell (60 Washable Colors, 24 Vibrant Colors)	ND	Pass



Test Report

ID: RA0034377(2)

Date: 2023-10-18

Page 8 of 85

Test Item		Total Lead (Pb)	---
Method Detection Limit (mg/kg)		2	---
CPSIA / Cal. Prop 65 Limits (mg/kg)		100	---
Test Part Description		Result (mg/kg)	Comment
No.25	Metallic brown plastic shell (60 Washable Colors) Metallic light green plastic shell (60 Washable Colors) Metallic yellow plastic shell (60 Washable Colors)	ND	Pass
No.26	Black plastic shell (60 Washable Colors, 14 Global Skin Tones) Dull grey plastic shell (60 Washable Colors, 14 Global Skin Tones) Dull green plastic shell (60 Washable Colors, 14 Global Skin Tones)	5.0	Pass
No.27	Brown plastic shell (60 Washable Colors, 14 Global Skin Tones) Grey plastic shell (60 Washable Colors, 14 Global Skin Tones) White plastic shell (24 Vibrant Colors)	11.8	Pass
No.28	Green black soft plastic shell (24 Vibrant Colors) Dark blue soft plastic shell (24 Vibrant Colors) Rose soft plastic shell (24 Vibrant Colors)	3.4	Pass
No.29	Purple soft plastic shell (24 Vibrant Colors) Light blue soft plastic shell (24 Vibrant Colors) Light green soft plastic shell (24 Vibrant Colors)	47.9	Pass
No.30	Buff soft plastic shell (24 Vibrant Colors) Orange soft plastic shell (24 Vibrant Colors) Red soft plastic shell (24 Vibrant Colors)	2.3	Pass
No.31	Black soft plastic shell (24 Vibrant Colors) White soft plastic shell (24 Vibrant Colors) Brown soft plastic shell (24 Vibrant Colors)	9.4	Pass
No.32	Fluorescent orange soft plastic shell (24 Vibrant Colors) Fluorescent red soft plastic shell (24 Vibrant Colors) Fluorescent green soft plastic shell (24 Vibrant Colors)	2.4	Pass
No.33	Fluorescent yellow soft plastic shell (24 Vibrant Colors) Fluorescent purple soft plastic shell (24 Vibrant Colors) Fluorescent blue soft plastic shell (24 Vibrant Colors)	ND	Pass
No.34	Metallic green soft plastic shell (24 Vibrant Colors) Metallic blue soft plastic shell (24 Vibrant Colors) Metallic purple soft plastic shell (24 Vibrant Colors)	4.3	Pass



Test Report

ID: RA0034377(2)

Date: 2023-10-18

Page 9 of 85

Test Item		Total Lead (Pb)	---
Method Detection Limit (mg/kg)		2	---
CPSIA / Cal. Prop 65 Limits (mg/kg)		100	---
Test Part Description		Result (mg/kg)	Comment
No.35	Metallic rose soft plastic shell (24 Vibrant Colors) Metallic silvery soft plastic shell (24 Vibrant Colors) Metallic golden soft plastic shell (24 Vibrant Colors)	ND	Pass

- Note:
1. mg/kg = Milligram per kilogram = ppm
 2. ND = Not detected (<Method detection limit)

F) Total Lead in Paint / Similar Surface Coating

With reference to CPSC-CH-E1003-09.1, analysis was performed by Inductively Coupled Plasma Optical Emission Spectrometer (ICP-OES).

Test Item		Total Lead (Pb)	---
Method Detection Limit (mg/kg)		2	---
CPSIA / Cal. Prop 65 Limits (mg/kg)		90	---
Test Part Description		Result (mg/kg)	Comment
No.1	Coffee solid tempera paint (14 Global Skin Tones) Dark coffee solid tempera paint (14 Global Skin Tones) Brown solid tempera paint (14 Global Skin Tones)	3.2	Pass
No.2	Light brown solid tempera paint (14 Global Skin Tones) Dark brown solid tempera paint (14 Global Skin Tones) Light coffee solid tempera paint (14 Global Skin Tones)	2.9	Pass
No.3	Dark apricot solid tempera paint (14 Global Skin Tones) Apricot solid tempera paint (14 Global Skin Tones) Dark wheat solid tempera paint (14 Global Skin Tones)	2.4	Pass
No.4	Wheat solid tempera paint (14 Global Skin Tones) Bright apricot solid tempera paint (14 Global Skin Tones) Light apricot solid tempera paint (14 Global Skin Tones)	ND	Pass
No.5	Pale yellow solid tempera paint (14 Global Skin Tones) Light pale yellow solid tempera paint (14 Global Skin Tones)	ND	Pass



Test Report

ID: RA0034377(2)

Date: 2023-10-18

Page 10 of 85

Test Item		Total Lead (Pb)	---
Method Detection Limit (mg/kg)		2	---
CPSIA / Cal. Prop 65 Limits (mg/kg)		90	---
Test Part Description		Result (mg/kg)	Comment
No.6	Prussian blue solid tempera paint (60 Washable Colors) Light yellow solid tempera paint (60 Washable Colors) Green black solid tempera paint (60 Washable Colors, 24 Vibrant Colors)	15.8	Pass
No.7	Dark blue solid tempera paint (60 Washable Colors, 24 Vibrant Colors) Rose solid tempera paint (60 Washable Colors, 24 Vibrant Colors) Purple solid tempera paint (60 Washable Colors, 24 Vibrant Colors)	5.3	Pass
No.8	Light blue solid tempera paint (60 Washable Colors, 24 Vibrant Colors) Light green solid tempera paint (60 Washable Colors, 24 Vibrant Colors) Buff solid tempera paint (60 Washable Colors, 24 Vibrant Colors)	7.8	Pass
No.9	Yellow solid tempera paint (60 Washable Colors) Orange solid tempera paint (60 Washable Colors, 24 Vibrant Colors) Red solid tempera paint (60 Washable Colors, 24 Vibrant Colors)	ND	Pass
No.10	Black solid tempera paint (60 Washable Colors, 24 Vibrant Colors) White solid tempera paint (60 Washable Colors, 24 Vibrant Colors) Brown solid tempera paint (60 Washable Colors, 24 Vibrant Colors)	3.8	Pass
No.11	Pale purple solid tempera paint (60 Washable Colors) Earth yellow solid tempera paint (60 Washable Colors) Orange-yellow solid tempera paint (60 Washable Colors)	3.3	Pass
No.12	Lake blue solid tempera paint (60 Washable Colors) Grass green solid tempera paint (60 Washable Colors) Dark green solid tempera paint (60 Washable Colors)	15.6	Pass
No.13	Rose-bengal solid tempera paint (60 Washable Colors) Dark red solid tempera paint (60 Washable Colors) Turquoise solid tempera paint (60 Washable Colors)	12.5	Pass



Test Report

ID: RA0034377(2)

Date: 2023-10-18

Page 11 of 85

Test Item		Total Lead (Pb)	---
Method Detection Limit (mg/kg)		2	---
CPSIA / Cal. Prop 65 Limits (mg/kg)		90	---
Test Part Description		Result (mg/kg)	Comment
No.14	Fluorescent orange solid tempera paint (60 Washable Colors, 24 Vibrant Colors)	ND	Pass
	Fluorescent red solid tempera paint (60 Washable Colors, 24 Vibrant Colors)		
	Fluorescent green solid tempera paint (60 Washable Colors, 24 Vibrant Colors)		
No.15	Fluorescent yellow solid tempera paint (60 Washable Colors, 24 Vibrant Colors)	ND	Pass
	Fluorescent purple solid tempera paint (60 Washable Colors, 24 Vibrant Colors)		
	Fluorescent blue solid tempera paint (60 Washable Colors, 24 Vibrant Colors)		
No.16	Sky blue solid tempera paint (60 Washable Colors)	4.3	Pass
	White yellow solid tempera paint (60 Washable Colors)		
	Light purple solid tempera paint (60 Washable Colors)		
No.17	Grayish purple solid tempera paint (60 Washable Colors)	8.3	Pass
	Cadet gray solid tempera paint (60 Washable Colors)		
	Soft green solid tempera paint (60 Washable Colors)		
No.18	Light grayish blue solid tempera paint (60 Washable Colors)	4.9	Pass
	Apple green solid tempera paint (60 Washable Colors)		
	Pea green solid tempera paint (60 Washable Colors)		
No.19	Napoli yellow solid tempera paint (60 Washable Colors)	ND	Pass
	Cosmos bipinnatus yellow solid tempera paint (60 Washable Colors)		
	Crape myrtle pink solid tempera paint (60 Washable Colors)		
No.20	Pale grey solid tempera paint (60 Washable Colors)	ND	Pass
	Olive green solid tempera paint (60 Washable Colors)		
	Ochre solid tempera paint (60 Washable Colors)		
No.21	Blue solid tempera paint (60 Washable Colors)	3.3	Pass
	Flesh solid tempera paint (60 Washable Colors)		
	Sand red solid tempera paint (60 Washable Colors)		



Test Report

ID: RA0034377(2)

Date: 2023-10-18

Page 12 of 85

Test Item		Total Lead (Pb)	---
Method Detection Limit (mg/kg)		2	---
CPSIA / Cal. Prop 65 Limits (mg/kg)		90	---
Test Part Description		Result (mg/kg)	Comment
No.22	Metallic white solid tempera paint (60 Washable Colors) Metallic black solid tempera paint (60 Washable Colors) Metallic red solid tempera paint (60 Washable Colors)	ND	Pass
No.23	Metallic green solid tempera paint (60 Washable Colors, 24 Vibrant Colors) Metallic blue solid tempera paint (60 Washable Colors, 24 Vibrant Colors) Metallic purple solid tempera paint (60 Washable Colors, 24 Vibrant Colors)	11.5	Pass
No.24	Metallic rose solid tempera paint (60 Washable Colors, 24 Vibrant Colors) Metallic silvery solid tempera paint (60 Washable Colors, 24 Vibrant Colors) Metallic golden solid tempera paint (60 Washable Colors, 24 Vibrant Colors)	ND	Pass
No.25	Metallic brown solid tempera paint (60 Washable Colors) Metallic light green solid tempera paint (60 Washable Colors) Metallic yellow solid tempera paint (60 Washable Colors)	ND	Pass
No.26	Silvery coating on plastic (14 Global Skin Tones, 60 Washable Colors, 24 Vibrant Colors) Black coating on plastic (14 Global Skin Tones, 60 Washable Colors)	ND	Pass

- Note:
1. mg/kg = Milligram per kilogram = ppm
 2. ND = Not detected (<Method detection limit)



G) Total Cadmium in Accessible Materials

With reference to CPSC-CH-E1002-08.3, CPSC-CH-E1003-09.1, analysis was performed by Inductively Coupled Plasma Optical Emission Spectrometer (ICP-OES).

Test Item		Total Cadmium (Cd)	---
Method Detection Limit (mg/kg)		2	---
Cal. Prop 65 Limit (mg/kg)		75	---
Test Part Description		Result (mg/kg)	Comment
No.1	Coffee plastic shell (14 Global Skin Tones)	ND	Pass
	Dark coffee plastic shell (14 Global Skin Tones)		
	Brown plastic shell (14 Global Skin Tones)		
No.2	Light brown plastic shell (14 Global Skin Tones)	ND	Pass
	Dark brown plastic shell (14 Global Skin Tones)		
	Light coffee plastic shell (14 Global Skin Tones)		
No.3	Dark apricot plastic shell (14 Global Skin Tones)	ND	Pass
	Apricot plastic shell (14 Global Skin Tones)		
	Dark wheat plastic shell (14 Global Skin Tones)		
No.4	Wheat plastic shell (14 Global Skin Tones)	ND	Pass
	Bright apricot plastic shell (14 Global Skin Tones)		
	Light apricot plastic shell (14 Global Skin Tones)		
No.5	Pale yellow plastic shell (14 Global Skin Tones)	ND	Pass
	Light pale yellow plastic shell (14 Global Skin Tones)		
	Transparent plastic shell (14 Global Skin Tones)		
No.6	Prussian blue plastic shell (60 Washable Colors)	ND	Pass
	Light yellow plastic shell (60 Washable Colors)		
	Green black plastic shell (60 Washable Colors, 24 Vibrant Colors)		
No.7	Dark blue plastic shell (60 Washable Colors, 24 Vibrant Colors)	ND	Pass
	Rose plastic shell (60 Washable Colors, 24 Vibrant Colors)		
	Purple plastic shell (60 Washable Colors, 24 Vibrant Colors)		
No.8	Light blue plastic shell (60 Washable Colors, 24 Vibrant Colors)	ND	Pass
	Light green plastic shell (60 Washable Colors, 24 Vibrant Colors)		
	Buff plastic shell (60 Washable Colors, 24 Vibrant Colors)		

Test Report

ID: RA0034377(2)

Date: 2023-10-18

Page 14 of 85

Test Item		Total Cadmium (Cd)	---
Method Detection Limit (mg/kg)		2	---
Cal. Prop 65 Limit (mg/kg)		75	---
Test Part Description		Result (mg/kg)	Comment
No.9	Yellow plastic shell (60 Washable Colors)	ND	Pass
	Orange plastic shell (60 Washable Colors, 24 Vibrant Colors)		
	Red plastic shell (60 Washable Colors, 24 Vibrant Colors)		
No.10	Black plastic shell (60 Washable Colors, 24 Vibrant Colors)	ND	Pass
	White plastic shell (60 Washable Colors, 24 Vibrant Colors)		
	Brown plastic shell (60 Washable Colors, 24 Vibrant Colors)		
No.11	Pale purple plastic shell (60 Washable Colors)	ND	Pass
	Earth yellow plastic shell (60 Washable Colors)		
	Orange-yellow plastic shell (60 Washable Colors)		
No.12	Lake blue plastic shell (60 Washable Colors)	ND	Pass
	Grass green plastic shell (60 Washable Colors)		
	Dark green plastic shell (60 Washable Colors)		
No.13	Rose-bengal plastic shell (60 Washable Colors)	ND	Pass
	Dark red plastic shell (60 Washable Colors)		
	Turquoise plastic shell (60 Washable Colors)		
No.14	Fluorescent orange plastic shell (60 Washable Colors, 24 Vibrant Colors)	ND	Pass
	Fluorescent red plastic shell (60 Washable Colors, 24 Vibrant Colors)		
	Fluorescent green plastic shell (60 Washable Colors, 24 Vibrant Colors)		
No.15	Fluorescent yellow plastic shell (60 Washable Colors, 24 Vibrant Colors)	ND	Pass
	Fluorescent purple plastic shell (60 Washable Colors, 24 Vibrant Colors)		
	Fluorescent blue plastic shell (60 Washable Colors, 24 Vibrant Colors)		
No.16	Sky blue plastic shell (60 Washable Colors)	ND	Pass
	White yellow plastic shell (60 Washable Colors)		
	Light purple plastic shell (60 Washable Colors)		



Test Report

ID: RA0034377(2)

Date: 2023-10-18

Page 15 of 85

Test Item		Total Cadmium (Cd)	---
Method Detection Limit (mg/kg)		2	---
Cal. Prop 65 Limit (mg/kg)		75	---
Test Part Description		Result (mg/kg)	Comment
No.17	Grayish purple plastic shell (60 Washable Colors)	ND	Pass
	Cadet gray plastic shell (60 Washable Colors)		
	Soft green plastic shell (60 Washable Colors)		
No.18	Light grayish blue plastic shell (60 Washable Colors)	ND	Pass
	Apple green plastic shell (60 Washable Colors)		
	Pea green plastic shell (60 Washable Colors)		
No.19	Napoli yellow plastic shell (60 Washable Colors)	ND	Pass
	Cosmos bipinnatus yellow plastic shell (60 Washable Colors)		
	Crape myrtle pink plastic shell (60 Washable Colors)		
No.20	Pale grey plastic shell (60 Washable Colors)	ND	Pass
	Olive green plastic shell (60 Washable Colors)		
	Ochre plastic shell (60 Washable Colors)		
No.21	Blue plastic shell (60 Washable Colors)	ND	Pass
	Flesh plastic shell (60 Washable Colors)		
	Sand red plastic shell (60 Washable Colors)		
No.22	Metallic white plastic shell (60 Washable Colors)	ND	Pass
	Metallic black plastic shell (60 Washable Colors)		
	Metallic red plastic shell (60 Washable Colors)		
No.23	Metallic green plastic shell (60 Washable Colors, 24 Vibrant Colors)	ND	Pass
	Metallic blue plastic shell (60 Washable Colors, 24 Vibrant Colors)		
	Metallic purple plastic shell (60 Washable Colors, 24 Vibrant Colors)		
No.24	Metallic rose plastic shell (60 Washable Colors, 24 Vibrant Colors)	ND	Pass
	Metallic silvery plastic shell (60 Washable Colors, 24 Vibrant Colors)		
	Metallic golden plastic shell (60 Washable Colors, 24 Vibrant Colors)		



Test Report

ID: RA0034377(2)

Date: 2023-10-18

Page 16 of 85

Test Item		Total Cadmium (Cd)	---
Method Detection Limit (mg/kg)		2	---
Cal. Prop 65 Limit (mg/kg)		75	---
Test Part Description		Result (mg/kg)	Comment
No.25	Metallic brown plastic shell (60 Washable Colors)	ND	Pass
	Metallic light green plastic shell (60 Washable Colors)		
	Metallic yellow plastic shell (60 Washable Colors)		
No.26	Black plastic shell (60 Washable Colors, 14 Global Skin Tones)	ND	Pass
	Dull grey plastic shell (60 Washable Colors, 14 Global Skin Tones)		
	Dull green plastic shell (60 Washable Colors, 14 Global Skin Tones)		
No.27	Brown plastic shell (60 Washable Colors, 14 Global Skin Tones)	ND	Pass
	Grey plastic shell (60 Washable Colors, 14 Global Skin Tones)		
	White plastic shell (24 Vibrant Colors)		
No.28	Green black soft plastic shell (24 Vibrant Colors)	ND	Pass
	Dark blue soft plastic shell (24 Vibrant Colors)		
	Rose soft plastic shell (24 Vibrant Colors)		
No.29	Purple soft plastic shell (24 Vibrant Colors)	ND	Pass
	Light blue soft plastic shell (24 Vibrant Colors)		
	Light green soft plastic shell (24 Vibrant Colors)		
No.30	Buff soft plastic shell (24 Vibrant Colors)	ND	Pass
	Orange soft plastic shell (24 Vibrant Colors)		
	Red soft plastic shell (24 Vibrant Colors)		
No.31	Black soft plastic shell (24 Vibrant Colors)	ND	Pass
	White soft plastic shell (24 Vibrant Colors)		
	Brown soft plastic shell (24 Vibrant Colors)		
No.32	Fluorescent orange soft plastic shell (24 Vibrant Colors)	ND	Pass
	Fluorescent red soft plastic shell (24 Vibrant Colors)		
	Fluorescent green soft plastic shell (24 Vibrant Colors)		
No.33	Fluorescent yellow soft plastic shell (24 Vibrant Colors)	ND	Pass
	Fluorescent purple soft plastic shell (24 Vibrant Colors)		
	Fluorescent blue soft plastic shell (24 Vibrant Colors)		



Test Report

ID: RA0034377(2)

Date: 2023-10-18

Page 17 of 85

Test Item		Total Cadmium (Cd)	---
Method Detection Limit (mg/kg)		2	---
Cal. Prop 65 Limit (mg/kg)		75	---
Test Part Description		Result (mg/kg)	Comment
No.34	Metallic green soft plastic shell (24 Vibrant Colors)	ND	Pass
	Metallic blue soft plastic shell (24 Vibrant Colors)		
	Metallic purple soft plastic shell (24 Vibrant Colors)		
No.35	Metallic rose soft plastic shell (24 Vibrant Colors)	ND	Pass
	Metallic silvery soft plastic shell (24 Vibrant Colors)		
	Metallic golden soft plastic shell (24 Vibrant Colors)		
No.36	Coffee solid tempera paint (14 Global Skin Tones)	ND	Pass
	Dark coffee solid tempera paint (14 Global Skin Tones)		
	Brown solid tempera paint (14 Global Skin Tones)		
No.37	Light brown solid tempera paint (14 Global Skin Tones)	ND	Pass
	Dark brown solid tempera paint (14 Global Skin Tones)		
	Light coffee solid tempera paint (14 Global Skin Tones)		
No.38	Dark apricot solid tempera paint (14 Global Skin Tones)	ND	Pass
	Apricot solid tempera paint (14 Global Skin Tones)		
	Dark wheat solid tempera paint (14 Global Skin Tones)		
No.39	Wheat solid tempera paint (14 Global Skin Tones)	ND	Pass
	Bright apricot solid tempera paint (14 Global Skin Tones)		
	Light apricot solid tempera paint (14 Global Skin Tones)		
No.40	Pale yellow solid tempera paint (14 Global Skin Tones)	ND	Pass
	Light pale yellow solid tempera paint (14 Global Skin Tones)		
No.41	Prussian blue solid tempera paint (60 Washable Colors)	ND	Pass
	Light yellow solid tempera paint (60 Washable Colors)		
	Green black solid tempera paint (60 Washable Colors, 24 Vibrant Colors)		
No.42	Dark blue solid tempera paint (60 Washable Colors, 24 Vibrant Colors)	ND	Pass
	Rose solid tempera paint (60 Washable Colors, 24 Vibrant Colors)		
	Purple solid tempera paint (60 Washable Colors, 24 Vibrant Colors)		



Test Report

ID: RA0034377(2)

Date: 2023-10-18

Page 18 of 85

Test Item		Total Cadmium (Cd)	---
Method Detection Limit (mg/kg)		2	---
Cal. Prop 65 Limit (mg/kg)		75	---
Test Part Description		Result (mg/kg)	Comment
No.43	Light blue solid tempera paint (60 Washable Colors, 24 Vibrant Colors)	ND	Pass
	Light green solid tempera paint (60 Washable Colors, 24 Vibrant Colors)		
	Buff solid tempera paint (60 Washable Colors, 24 Vibrant Colors)		
No.44	Yellow solid tempera paint (60 Washable Colors)	ND	Pass
	Orange solid tempera paint (60 Washable Colors, 24 Vibrant Colors)		
	Red solid tempera paint (60 Washable Colors, 24 Vibrant Colors)		
No.45	Black solid tempera paint (60 Washable Colors, 24 Vibrant Colors)	ND	Pass
	White solid tempera paint (60 Washable Colors, 24 Vibrant Colors)		
	Brown solid tempera paint (60 Washable Colors, 24 Vibrant Colors)		
No.46	Pale purple solid tempera paint (60 Washable Colors)	ND	Pass
	Earth yellow solid tempera paint (60 Washable Colors)		
	Orange-yellow solid tempera paint (60 Washable Colors)		
No.47	Lake blue solid tempera paint (60 Washable Colors)	ND	Pass
	Grass green solid tempera paint (60 Washable Colors)		
	Dark green solid tempera paint (60 Washable Colors)		
No.48	Rose-bengal solid tempera paint (60 Washable Colors)	ND	Pass
	Dark red solid tempera paint (60 Washable Colors)		
	Turquoise solid tempera paint (60 Washable Colors)		



Test Report

ID: RA0034377(2)

Date: 2023-10-18

Page 19 of 85

Test Item		Total Cadmium (Cd)	---
Method Detection Limit (mg/kg)		2	---
Cal. Prop 65 Limit (mg/kg)		75	---
Test Part Description		Result (mg/kg)	Comment
No.49	Fluorescent orange solid tempera paint (60 Washable Colors, 24 Vibrant Colors)	ND	Pass
	Fluorescent red solid tempera paint (60 Washable Colors, 24 Vibrant Colors)		
	Fluorescent green solid tempera paint (60 Washable Colors, 24 Vibrant Colors)		
No.50	Fluorescent yellow solid tempera paint (60 Washable Colors, 24 Vibrant Colors)	ND	Pass
	Fluorescent purple solid tempera paint (60 Washable Colors, 24 Vibrant Colors)		
	Fluorescent blue solid tempera paint (60 Washable Colors, 24 Vibrant Colors)		
No.51	Sky blue solid tempera paint (60 Washable Colors)	ND	Pass
	White yellow solid tempera paint (60 Washable Colors)		
	Light purple solid tempera paint (60 Washable Colors)		
No.52	Grayish purple solid tempera paint (60 Washable Colors)	ND	Pass
	Cadet gray solid tempera paint (60 Washable Colors)		
	Soft green solid tempera paint (60 Washable Colors)		
No.53	Light grayish blue solid tempera paint (60 Washable Colors)	ND	Pass
	Apple green solid tempera paint (60 Washable Colors)		
	Pea green solid tempera paint (60 Washable Colors)		
No.54	Napoli yellow solid tempera paint (60 Washable Colors)	ND	Pass
	Cosmos bipinnatus yellow solid tempera paint (60 Washable Colors)		
	Crape myrtle pink solid tempera paint (60 Washable Colors)		
No.55	Pale grey solid tempera paint (60 Washable Colors)	ND	Pass
	Olive green solid tempera paint (60 Washable Colors)		
	Ochre solid tempera paint (60 Washable Colors)		

Test Report

ID: RA0034377(2)

Date: 2023-10-18

Page 20 of 85

Test Item		Total Cadmium (Cd)	---
Method Detection Limit (mg/kg)		2	---
Cal. Prop 65 Limit (mg/kg)		75	---
Test Part Description		Result (mg/kg)	Comment
No.56	Blue solid tempera paint (60 Washable Colors)	ND	Pass
	Flesh solid tempera paint (60 Washable Colors)		
	Sand red solid tempera paint (60 Washable Colors)		
No.57	Metallic white solid tempera paint (60 Washable Colors)	ND	Pass
	Metallic black solid tempera paint (60 Washable Colors)		
	Metallic red solid tempera paint (60 Washable Colors)		
No.58	Metallic green solid tempera paint (60 Washable Colors, 24 Vibrant Colors)	ND	Pass
	Metallic blue solid tempera paint (60 Washable Colors, 24 Vibrant Colors)		
	Metallic purple solid tempera paint (60 Washable Colors, 24 Vibrant Colors)		
No.59	Metallic rose solid tempera paint (60 Washable Colors, 24 Vibrant Colors)	ND	Pass
	Metallic silvery solid tempera paint (60 Washable Colors, 24 Vibrant Colors)		
	Metallic golden solid tempera paint (60 Washable Colors, 24 Vibrant Colors)		
No.60	Metallic brown solid tempera paint (60 Washable Colors)	ND	Pass
	Metallic light green solid tempera paint (60 Washable Colors)		
	Metallic yellow solid tempera paint (60 Washable Colors)		
No.61	Silvery coating on plastic (14 Global Skin Tones, 60 Washable Colors, 24 Vibrant Colors)	ND	Pass
	Black coating on plastic (14 Global Skin Tones, 60 Washable Colors)		

- Note:
1. mg/kg = Milligram per kilogram = ppm
 2. ND = Not detected (<Method detection limit)



Test Report

ID: RA0034377(2)

Date: 2023-10-18

Page 21 of 85

H) Phthalates Content

With reference to CPSC-CH-C1001-09.4, analysis was performed by Gas Chromatography/Mass Spectrometry (GC-MS).

Test Item	DnHP DHEXP	DBP	BBP	DEHP	DINP	DNOP	DIDP	---
Method Detection Limit (%)	0.003	0.003	0.003	0.003	0.010	0.003	0.010	---
16 CFR Part 1307 & Cal. Prop 65 Limits (%)	0.1	0.1	0.1	0.1	0.1	---	0.1	---
Test Part Description	Result (%)							Comment
No.1 Coffee plastic shell (14 Global Skin Tones) Dark coffee plastic shell (14 Global Skin Tones) Brown plastic shell (14 Global Skin Tones)	ND	ND	ND	ND	ND	ND	ND	Pass
	No.2 Light brown plastic shell (14 Global Skin Tones) Dark brown plastic shell (14 Global Skin Tones) Light coffee plastic shell (14 Global Skin Tones)	ND	ND	ND	ND	ND	ND	Pass
		No.3 Dark apricot plastic shell (14 Global Skin Tones) Apricot plastic shell (14 Global Skin Tones) Dark wheat plastic shell (14 Global Skin Tones)	ND	ND	ND	ND	ND	ND
No.4 Wheat plastic shell (14 Global Skin Tones) Bright apricot plastic shell (14 Global Skin Tones) Light apricot plastic shell (14 Global Skin Tones)			ND	ND	ND	ND	ND	ND



Test Report

ID: RA0034377(2)

Date: 2023-10-18

Page 22 of 85

Test Item		DnHP DHEXP	DBP	BBP	DEHP	DINP	DNOP	DIDP	---
Method Detection Limit (%)		0.003	0.003	0.003	0.003	0.010	0.003	0.010	---
16 CFR Part 1307 & Cal. Prop 65 Limits (%)		0.1	0.1	0.1	0.1	0.1	---	0.1	---
Test Part Description		Result (%)							Comment
No.5	Pale yellow plastic shell (14 Global Skin Tones)	ND	ND	ND	ND	ND	ND	ND	Pass
	Light pale yellow plastic shell (14 Global Skin Tones)								
	Transparent plastic shell (14 Global Skin Tones)								
No.6	Prussian blue plastic shell (60 Washable Colors)	ND	ND	ND	ND	ND	ND	ND	Pass
	Light yellow plastic shell (60 Washable Colors)								
	Green black plastic shell (60 Washable Colors, 24 Vibrant Colors)								
No.7	Dark blue plastic shell (60 Washable Colors, 24 Vibrant Colors)	ND	ND	ND	ND	ND	ND	ND	Pass
	Rose plastic shell (60 Washable Colors, 24 Vibrant Colors)								
	Purple plastic shell (60 Washable Colors, 24 Vibrant Colors)								
No.8	Light blue plastic shell (60 Washable Colors, 24 Vibrant Colors)	ND	ND	ND	ND	ND	ND	ND	Pass
	Light green plastic shell (60 Washable Colors, 24 Vibrant Colors)								
	Buff plastic shell (60 Washable Colors, 24 Vibrant Colors)								



Test Report

ID: RA0034377(2)

Date: 2023-10-18

Page 23 of 85

Test Item		DnHP DHEXP	DBP	BBP	DEHP	DINP	DNOP	DIDP	---
Method Detection Limit (%)		0.003	0.003	0.003	0.003	0.010	0.003	0.010	---
16 CFR Part 1307 & Cal. Prop 65 Limits (%)		0.1	0.1	0.1	0.1	0.1	---	0.1	---
Test Part Description		Result (%)							Comment
No.9	Yellow plastic shell (60 Washable Colors)	ND	ND	ND	ND	ND	ND	ND	Pass
	Orange plastic shell (60 Washable Colors, 24 Vibrant Colors)								
	Red plastic shell (60 Washable Colors, 24 Vibrant Colors)								
No.10	Black plastic shell (60 Washable Colors, 24 Vibrant Colors)	ND	ND	ND	ND	ND	ND	ND	Pass
	White plastic shell (60 Washable Colors, 24 Vibrant Colors)								
	Brown plastic shell (60 Washable Colors, 24 Vibrant Colors)								
No.11	Pale purple plastic shell (60 Washable Colors)	ND	ND	ND	ND	ND	ND	ND	Pass
	Earth yellow plastic shell (60 Washable Colors)								
	Orange-yellow plastic shell (60 Washable Colors)								
No.12	Lake blue plastic shell (60 Washable Colors)	ND	ND	ND	ND	ND	ND	ND	Pass
	Grass green plastic shell (60 Washable Colors)								
	Dark green plastic shell (60 Washable Colors)								
No.13	Rose-bengal plastic shell (60 Washable Colors)	ND	ND	ND	ND	ND	ND	ND	Pass
	Dark red plastic shell (60 Washable Colors)								
	Turquoise plastic shell (60 Washable Colors)								



Test Report

ID: RA0034377(2)

Date: 2023-10-18

Page 24 of 85

Test Item		DnHP DHEXP	DBP	BBP	DEHP	DINP	DNOP	DIDP	---
Method Detection Limit (%)		0.003	0.003	0.003	0.003	0.010	0.003	0.010	---
16 CFR Part 1307 & Cal. Prop 65 Limits (%)		0.1	0.1	0.1	0.1	0.1	---	0.1	---
Test Part Description		Result (%)							Comment
No.14	Fluorescent orange plastic shell (60 Washable Colors, 24 Vibrant Colors)	ND	ND	ND	ND	ND	ND	ND	Pass
	Fluorescent red plastic shell (60 Washable Colors, 24 Vibrant Colors)								
	Fluorescent green plastic shell (60 Washable Colors, 24 Vibrant Colors)								
No.15	Fluorescent yellow plastic shell (60 Washable Colors, 24 Vibrant Colors)	ND	ND	ND	ND	ND	ND	ND	Pass
	Fluorescent purple plastic shell (60 Washable Colors, 24 Vibrant Colors)								
	Fluorescent blue plastic shell (60 Washable Colors, 24 Vibrant Colors)								
No.16	Sky blue plastic shell (60 Washable Colors)	ND	ND	ND	ND	ND	ND	ND	Pass
	White yellow plastic shell (60 Washable Colors)								
	Light purple plastic shell (60 Washable Colors)								
No.17	Grayish purple plastic shell (60 Washable Colors)	ND	ND	ND	ND	ND	ND	ND	Pass
	Cadet gray plastic shell (60 Washable Colors)								
	Soft green plastic shell (60 Washable Colors)								



Test Report

ID: RA0034377(2)

Date: 2023-10-18

Page 25 of 85

Test Item		DnHP DHEXP	DBP	BBP	DEHP	DINP	DNOP	DIDP	---
Method Detection Limit (%)		0.003	0.003	0.003	0.003	0.010	0.003	0.010	---
16 CFR Part 1307 & Cal. Prop 65 Limits (%)		0.1	0.1	0.1	0.1	0.1	---	0.1	---
Test Part Description		Result (%)							Comment
No.18	Light grayish blue plastic shell (60 Washable Colors)	ND	ND	ND	ND	ND	ND	ND	Pass
	Apple green plastic shell (60 Washable Colors)								
	Pea green plastic shell (60 Washable Colors)								
No.19	Napoli yellow plastic shell (60 Washable Colors)	ND	ND	ND	ND	ND	ND	ND	Pass
	Cosmos bipinnatus yellow plastic shell (60 Washable Colors)								
	Crape myrtle pink plastic shell (60 Washable Colors)								
No.20	Pale grey plastic shell (60 Washable Colors)	ND	ND	ND	ND	ND	ND	ND	Pass
	Olive green plastic shell (60 Washable Colors)								
	Ochre plastic shell (60 Washable Colors)								
No.21	Blue plastic shell (60 Washable Colors)	ND	ND	ND	ND	ND	ND	ND	Pass
	Flesh plastic shell (60 Washable Colors)								
	Sand red plastic shell (60 Washable Colors)								
No.22	Metallic white plastic shell (60 Washable Colors)	ND	ND	ND	ND	ND	ND	ND	Pass
	Metallic black plastic shell (60 Washable Colors)								
	Metallic red plastic shell (60 Washable Colors)								



Test Report

ID: RA0034377(2)

Date: 2023-10-18

Page 26 of 85

Test Item		DnHP DHEXP	DBP	BBP	DEHP	DINP	DNOP	DIDP	---
Method Detection Limit (%)		0.003	0.003	0.003	0.003	0.010	0.003	0.010	---
16 CFR Part 1307 & Cal. Prop 65 Limits (%)		0.1	0.1	0.1	0.1	0.1	---	0.1	---
Test Part Description		Result (%)							Comment
No.23	Metallic green plastic shell (60 Washable Colors, 24 Vibrant Colors)	ND	ND	ND	ND	ND	ND	ND	Pass
	Metallic blue plastic shell (60 Washable Colors, 24 Vibrant Colors)								
	Metallic purple plastic shell (60 Washable Colors, 24 Vibrant Colors)								
No.24	Metallic rose plastic shell (60 Washable Colors, 24 Vibrant Colors)	ND	ND	ND	ND	ND	ND	ND	Pass
	Metallic silvery plastic shell (60 Washable Colors, 24 Vibrant Colors)								
	Metallic golden plastic shell (60 Washable Colors, 24 Vibrant Colors)								
No.25	Metallic brown plastic shell (60 Washable Colors)	ND	ND	ND	ND	ND	ND	ND	Pass
	Metallic light green plastic shell (60 Washable Colors)								
	Metallic yellow plastic shell (60 Washable Colors)								



Test Report

ID: RA0034377(2)

Date: 2023-10-18

Page 27 of 85

Test Item	DnHP DHEXP	DBP	BBP	DEHP	DINP	DNOP	DIDP	---
Method Detection Limit (%)	0.003	0.003	0.003	0.003	0.010	0.003	0.010	---
16 CFR Part 1307 & Cal. Prop 65 Limits (%)	0.1	0.1	0.1	0.1	0.1	---	0.1	---
Test Part Description	Result (%)							Comment
No.26 Black plastic shell (60 Washable Colors, 14 Global Skin Tones) Dull grey plastic shell (60 Washable Colors, 14 Global Skin Tones) Dull green plastic shell (60 Washable Colors, 14 Global Skin Tones)	ND	ND	ND	ND	ND	ND	ND	Pass
No.27 Brown plastic shell (60 Washable Colors, 14 Global Skin Tones) Grey plastic shell (60 Washable Colors, 14 Global Skin Tones) White plastic shell (24 Vibrant Colors)	ND	ND	ND	ND	ND	ND	ND	Pass
No.28 Green black soft plastic shell (24 Vibrant Colors) Dark blue soft plastic shell (24 Vibrant Colors) Rose soft plastic shell (24 Vibrant Colors)	ND	ND	ND	ND	ND	ND	ND	Pass
No.29 Purple soft plastic shell (24 Vibrant Colors) Light blue soft plastic shell (24 Vibrant Colors) Light green soft plastic shell (24 Vibrant Colors)	ND	ND	ND	ND	ND	ND	ND	Pass



Test Report

ID: RA0034377(2)

Date: 2023-10-18

Page 28 of 85

Test Item		DnHP DHEXP	DBP	BBP	DEHP	DINP	DNOP	DIDP	---
Method Detection Limit (%)		0.003	0.003	0.003	0.003	0.010	0.003	0.010	---
16 CFR Part 1307 & Cal. Prop 65 Limits (%)		0.1	0.1	0.1	0.1	0.1	---	0.1	---
Test Part Description		Result (%)							Comment
No.30	Buff soft plastic shell (24 Vibrant Colors)	ND	ND	ND	ND	ND	ND	ND	Pass
	Orange soft plastic shell(24 Vibrant Colors)								
	Red soft plastic shell (24 Vibrant Colors)								
No.31	Black soft plastic shell (24 Vibrant Colors)	ND	ND	ND	ND	ND	ND	ND	Pass
	White soft plastic shell (24 Vibrant Colors)								
	Brown soft plastic shell (24 Vibrant Colors)								
No.32	Fluorescent orange soft plastic shell (24 Vibrant Colors)	ND	ND	ND	ND	ND	ND	ND	Pass
	Fluorescent red soft plastic shell (24 Vibrant Colors)								
	Fluorescent green soft plastic shell (24 Vibrant Colors)								
No.33	Fluorescent yellow soft plastic shell (24 Vibrant Colors)	ND	ND	ND	ND	ND	ND	ND	Pass
	Fluorescent purple soft plastic shell (24 Vibrant Colors)								
	Fluorescent blue soft plastic shell (24 Vibrant Colors)								
No.34	Metallic green soft plastic shell (24 Vibrant Colors)	ND	ND	ND	ND	ND	ND	ND	Pass
	Metallic blue soft plastic shell (24 Vibrant Colors)								
	Metallic purple soft plastic shell (24 Vibrant Colors)								



Test Report

ID: RA0034377(2)

Date: 2023-10-18

Page 29 of 85

Test Item		DnHP DHEXP	DBP	BBP	DEHP	DINP	DNOP	DIDP	---
Method Detection Limit (%)		0.003	0.003	0.003	0.003	0.010	0.003	0.010	---
16 CFR Part 1307 & Cal. Prop 65 Limits (%)		0.1	0.1	0.1	0.1	0.1	---	0.1	---
Test Part Description		Result (%)							Comment
No.35	Metallic rose soft plastic shell (24 Vibrant Colors)	ND	ND	ND	ND	ND	ND	ND	Pass
	Metallic silvery soft plastic shell (24 Vibrant Colors)								
	Metallic golden soft plastic shell (24 Vibrant Colors)								
No.36	Coffee solid tempera paint (14 Global Skin Tones)	ND	ND	ND	ND	ND	ND	ND	Pass
	Dark coffee solid tempera paint (14 Global Skin Tones)								
	Brown solid tempera paint (14 Global Skin Tones)								
No.37	Light brown solid tempera paint (14 Global Skin Tones)	ND	ND	ND	ND	ND	ND	ND	Pass
	Dark brown solid tempera paint (14 Global Skin Tones)								
	Light coffee solid tempera paint (14 Global Skin Tones)								
No.38	Dark apricot solid tempera paint (14 Global Skin Tones)	ND	ND	ND	ND	ND	ND	ND	Pass
	Apricot solid tempera paint (14 Global Skin Tones)								
	Dark wheat solid tempera paint (14 Global Skin Tones)								
No.39	Wheat solid tempera paint (14 Global Skin Tones)	ND	ND	ND	ND	ND	ND	ND	Pass
	Bright apricot solid tempera paint (14 Global Skin Tones)								
	Light apricot solid tempera paint (14 Global Skin Tones)								



Test Report

ID: RA0034377(2)

Date: 2023-10-18

Page 30 of 85

Test Item		DnHP DHEXP	DBP	BBP	DEHP	DINP	DNOP	DIDP	---
Method Detection Limit (%)		0.003	0.003	0.003	0.003	0.010	0.003	0.010	---
16 CFR Part 1307 & Cal. Prop 65 Limits (%)		0.1	0.1	0.1	0.1	0.1	---	0.1	---
Test Part Description		Result (%)							Comment
No.40	Pale yellow solid tempera paint (14 Global Skin Tones) Light pale yellow solid tempera paint (14 Global Skin Tones)	ND	ND	ND	ND	ND	ND	ND	Pass
No.41	Prussian blue solid tempera paint (60 Washable Colors) Light yellow solid tempera paint (60 Washable Colors) Green black solid tempera paint (60 Washable Colors, 24 Vibrant Colors)	ND	ND	ND	ND	ND	ND	ND	Pass
No.42	Dark blue solid tempera paint (60 Washable Colors, 24 Vibrant Colors) Rose solid tempera paint (60 Washable Colors, 24 Vibrant Colors) Purple solid tempera paint (60 Washable Colors, 24 Vibrant Colors)	ND	ND	ND	ND	ND	ND	ND	Pass
No.43	Light blue solid tempera paint (60 Washable Colors, 24 Vibrant Colors) Light green solid tempera paint (60 Washable Colors, 24 Vibrant Colors) Buff solid tempera paint (60 Washable Colors, 24 Vibrant Colors)	ND	ND	ND	ND	ND	ND	ND	Pass



Test Report

ID: RA0034377(2)

Date: 2023-10-18

Page 31 of 85

Test Item		DnHP DHEXP	DBP	BBP	DEHP	DINP	DNOP	DIDP	---
Method Detection Limit (%)		0.003	0.003	0.003	0.003	0.010	0.003	0.010	---
16 CFR Part 1307 & Cal. Prop 65 Limits (%)		0.1	0.1	0.1	0.1	0.1	---	0.1	---
Test Part Description		Result (%)							Comment
No.44	Yellow solid tempera paint (60 Washable Colors)	ND	ND	ND	ND	ND	ND	ND	Pass
	Orange solid tempera paint (60 Washable Colors, 24 Vibrant Colors)								
	Red solid tempera paint (60 Washable Colors, 24 Vibrant Colors)								
No.45	Black solid tempera paint (60 Washable Colors, 24 Vibrant Colors)	ND	ND	ND	ND	ND	ND	ND	Pass
	White solid tempera paint (60 Washable Colors, 24 Vibrant Colors)								
	Brown solid tempera paint (60 Washable Colors, 24 Vibrant Colors)								
No.46	Pale purple solid tempera paint (60 Washable Colors)	ND	ND	ND	ND	ND	ND	ND	Pass
	Earth yellow solid tempera paint (60 Washable Colors)								
	Orange-yellow solid tempera paint (60 Washable Colors)								
No.47	Lake blue solid tempera paint (60 Washable Colors)	ND	ND	ND	ND	ND	ND	ND	Pass
	Grass green solid tempera paint (60 Washable Colors)								
	Dark green solid tempera paint (60 Washable Colors)								



Test Report

ID: RA0034377(2)

Date: 2023-10-18

Page 32 of 85

Test Item		DnHP DHEXP	DBP	BBP	DEHP	DINP	DNOP	DIDP	---
Method Detection Limit (%)		0.003	0.003	0.003	0.003	0.010	0.003	0.010	---
16 CFR Part 1307 & Cal. Prop 65 Limits (%)		0.1	0.1	0.1	0.1	0.1	---	0.1	---
Test Part Description		Result (%)							Comment
No.48	Rose-bengal solid tempera paint (60 Washable Colors)	ND	ND	ND	ND	ND	ND	ND	Pass
	Dark red solid tempera paint (60 Washable Colors)								
	Turquoise solid tempera paint (60 Washable Colors)								
No.49	Fluorescent orange solid tempera paint (60 Washable Colors, 24 Vibrant Colors)	ND	ND	ND	ND	ND	ND	ND	Pass
	Fluorescent red solid tempera paint (60 Washable Colors, 24 Vibrant Colors)								
	Fluorescent green solid tempera paint (60 Washable Colors, 24 Vibrant Colors)								
No.50	Fluorescent yellow solid tempera paint (60 Washable Colors, 24 Vibrant Colors)	ND	ND	ND	ND	ND	ND	ND	Pass
	Fluorescent purple solid tempera paint (60 Washable Colors, 24 Vibrant Colors)								
	Fluorescent blue solid tempera paint (60 Washable Colors, 24 Vibrant Colors)								
No.51	Sky blue solid tempera paint (60 Washable Colors)	ND	ND	ND	ND	ND	ND	ND	Pass
	White yellow solid tempera paint (60 Washable Colors)								
	Light purple solid tempera paint (60 Washable Colors)								



Test Report

ID: RA0034377(2)

Date: 2023-10-18

Page 33 of 85

Test Item		DnHP DHEXP	DBP	BBP	DEHP	DINP	DNOP	DIDP	---
Method Detection Limit (%)		0.003	0.003	0.003	0.003	0.010	0.003	0.010	---
16 CFR Part 1307 & Cal. Prop 65 Limits (%)		0.1	0.1	0.1	0.1	0.1	---	0.1	---
Test Part Description		Result (%)							Comment
No.52	Grayish purple solid tempera paint (60 Washable Colors)	ND	ND	ND	ND	ND	ND	ND	Pass
	Cadet gray solid tempera paint (60 Washable Colors)								
	Soft green solid tempera paint (60 Washable Colors)								
No.53	Light grayish blue solid tempera paint (60 Washable Colors)	ND	ND	ND	ND	ND	ND	ND	Pass
	Apple green solid tempera paint (60 Washable Colors)								
	Pea green solid tempera paint (60 Washable Colors)								
No.54	Napoli yellow solid tempera paint (60 Washable Colors)	ND	ND	ND	ND	ND	ND	ND	Pass
	Cosmos bipinnatus yellow solid tempera paint (60 Washable Colors)								
	Crape myrtle pink solid tempera paint (60 Washable Colors)								
No.55	Pale grey solid tempera paint (60 Washable Colors)	ND	ND	ND	ND	ND	ND	ND	Pass
	Olive green solid tempera paint (60 Washable Colors)								
	Ochre solid tempera paint (60 Washable Colors)								
No.56	Blue solid tempera paint (60 Washable Colors)	ND	ND	ND	ND	ND	ND	ND	Pass
	Flesh solid tempera paint (60 Washable Colors)								
	Sand red solid tempera paint (60 Washable Colors)								



Test Report

ID: RA0034377(2)

Date: 2023-10-18

Page 34 of 85

Test Item		DnHP DHEXP	DBP	BBP	DEHP	DINP	DNOP	DIDP	---
Method Detection Limit (%)		0.003	0.003	0.003	0.003	0.010	0.003	0.010	---
16 CFR Part 1307 & Cal. Prop 65 Limits (%)		0.1	0.1	0.1	0.1	0.1	---	0.1	---
Test Part Description		Result (%)							Comment
No.57	Metallic white solid tempera paint (60 Washable Colors)	ND	ND	ND	ND	ND	ND	ND	Pass
	Metallic black solid tempera paint (60 Washable Colors)								
	Metallic red solid tempera paint (60 Washable Colors)								
No.58	Metallic green solid tempera paint (60 Washable Colors, 24 Vibrant Colors)	ND	ND	ND	ND	ND	ND	ND	Pass
	Metallic blue solid tempera paint (60 Washable Colors, 24 Vibrant Colors)								
	Metallic purple solid tempera paint (60 Washable Colors, 24 Vibrant Colors)								
No.59	Metallic rose solid tempera paint (60 Washable Colors, 24 Vibrant Colors)	ND	ND	ND	ND	ND	ND	ND	Pass
	Metallic silvery solid tempera paint (60 Washable Colors, 24 Vibrant Colors)								
	Metallic golden solid tempera paint (60 Washable Colors, 24 Vibrant Colors)								
No.60	Metallic brown solid tempera paint (60 Washable Colors)	ND	ND	ND	ND	ND	ND	ND	Pass
	Metallic light green solid tempera paint (60 Washable Colors)								
	Metallic yellow solid tempera paint (60 Washable Colors)								



Test Report

ID: RA0034377(2)

Date: 2023-10-18

Page 35 of 85

Test Item	DnHP DHEXP	DBP	BBP	DEHP	DINP	DNOP	DIDP	---
Method Detection Limit (%)	0.003	0.003	0.003	0.003	0.010	0.003	0.010	---
16 CFR Part 1307 & Cal. Prop 65 Limits (%)	0.1	0.1	0.1	0.1	0.1	---	0.1	---
Test Part Description	Result (%)							Comment
No.61 Silvery coating on plastic (14 Global Skin Tones, 60 Washable Colors, 24 Vibrant Colors) Black coating on plastic (14 Global Skin Tones, 60 Washable Colors)	ND	ND	ND	ND	ND	ND	ND	Pass

Test Item	DIBP	DPENP	DCHP	---
Method Detection Limit (%)	0.003	0.010	0.010	---
16 CFR Part 1307 & Cal. Prop 65 Limits (%)	0.1	0.1	0.1	---
Test Part Description	Result (%)			Comment
No.1 Coffee plastic shell (14 Global Skin Tones) Dark coffee plastic shell (14 Global Skin Tones) Brown plastic shell (14 Global Skin Tones)	ND	ND	ND	Pass
No.2 Light brown plastic shell (14 Global Skin Tones) Dark brown plastic shell (14 Global Skin Tones) Light coffee plastic shell (14 Global Skin Tones)	ND	ND	ND	Pass
No.3 Dark apricot plastic shell (14 Global Skin Tones) Apricot plastic shell (14 Global Skin Tones) Dark wheat plastic shell (14 Global Skin Tones)	ND	ND	ND	Pass



Test Report

ID: RA0034377(2)

Date: 2023-10-18

Page 36 of 85

Test Item	DIBP	DPENP	DCHP	---
Method Detection Limit (%)	0.003	0.010	0.010	---
16 CFR Part 1307 & Cal. Prop 65 Limits (%)	0.1	0.1	0.1	---
Test Part Description	Result (%)			Comment
No.4 Wheat plastic shell (14 Global Skin Tones) Bright apricot plastic shell (14 Global Skin Tones) Light apricot plastic shell (14 Global Skin Tones)	ND	ND	ND	Pass
No.5 Pale yellow plastic shell (14 Global Skin Tones) Light pale yellow plastic shell (14 Global Skin Tones) Transparent plastic shell (14 Global Skin Tones)	ND	ND	ND	Pass
No.6 Prussian blue plastic shell (60 Washable Colors) Light yellow plastic shell (60 Washable Colors) Green black plastic shell (60 Washable Colors, 24 Vibrant Colors)	ND	ND	ND	Pass
No.7 Dark blue plastic shell (60 Washable Colors, 24 Vibrant Colors) Rose plastic shell (60 Washable Colors, 24 Vibrant Colors) Purple plastic shell (60 Washable Colors, 24 Vibrant Colors)	ND	ND	ND	Pass
No.8 Light blue plastic shell (60 Washable Colors, 24 Vibrant Colors) Light green plastic shell (60 Washable Colors, 24 Vibrant Colors) Buff plastic shell (60 Washable Colors, 24 Vibrant Colors)	ND	ND	ND	Pass



Test Report

ID: RA0034377(2)

Date: 2023-10-18

Page 37 of 85

Test Item		DIBP	DPENP	DCHP	---
Method Detection Limit (%)		0.003	0.010	0.010	---
16 CFR Part 1307 & Cal. Prop 65 Limits (%)		0.1	0.1	0.1	---
Test Part Description		Result (%)			Comment
No.9	Yellow plastic shell (60 Washable Colors) Orange plastic shell (60 Washable Colors, 24 Vibrant Colors) Red plastic shell (60 Washable Colors, 24 Vibrant Colors)	ND	ND	ND	Pass
No.10	Black plastic shell (60 Washable Colors, 24 Vibrant Colors) White plastic shell (60 Washable Colors, 24 Vibrant Colors) Brown plastic shell (60 Washable Colors, 24 Vibrant Colors)	ND	ND	ND	Pass
No.11	Pale purple plastic shell (60 Washable Colors) Earth yellow plastic shell (60 Washable Colors) Orange-yellow plastic shell (60 Washable Colors)	ND	ND	ND	Pass
No.12	Lake blue plastic shell (60 Washable Colors) Grass green plastic shell (60 Washable Colors) Dark green plastic shell (60 Washable Colors)	ND	ND	ND	Pass
No.13	Rose-bengal plastic shell (60 Washable Colors) Dark red plastic shell (60 Washable Colors) Turquoise plastic shell (60 Washable Colors)	ND	ND	ND	Pass



Test Report

ID: RA0034377(2)

Date: 2023-10-18

Page 38 of 85

Test Item	DIBP	DPENP	DCHP	---
Method Detection Limit (%)	0.003	0.010	0.010	---
16 CFR Part 1307 & Cal. Prop 65 Limits (%)	0.1	0.1	0.1	---
Test Part Description	Result (%)			Comment
No.14 Fluorescent orange plastic shell (60 Washable Colors, 24 Vibrant Colors) Fluorescent red plastic shell (60 Washable Colors, 24 Vibrant Colors) Fluorescent green plastic shell (60 Washable Colors, 24 Vibrant Colors)	ND	ND	ND	Pass
No.15 Fluorescent yellow plastic shell (60 Washable Colors, 24 Vibrant Colors) Fluorescent purple plastic shell (60 Washable Colors, 24 Vibrant Colors) Fluorescent blue plastic shell (60 Washable Colors, 24 Vibrant Colors)	ND	ND	ND	Pass
No.16 Sky blue plastic shell (60 Washable Colors) White yellow plastic shell (60 Washable Colors) Light purple plastic shell (60 Washable Colors)	ND	ND	ND	Pass
No.17 Grayish purple plastic shell (60 Washable Colors) Cadet gray plastic shell (60 Washable Colors) Soft green plastic shell (60 Washable Colors)	ND	ND	ND	Pass
No.18 Light grayish blue plastic shell (60 Washable Colors) Apple green plastic shell (60 Washable Colors) Pea green plastic shell (60 Washable Colors)	ND	ND	ND	Pass



Test Report

ID: RA0034377(2)

Date: 2023-10-18

Page 39 of 85

Test Item		DIBP	DPENP	DCHP	---
Method Detection Limit (%)		0.003	0.010	0.010	---
16 CFR Part 1307 & Cal. Prop 65 Limits (%)		0.1	0.1	0.1	---
Test Part Description		Result (%)			Comment
No.19	Napoli yellow plastic shell (60 Washable Colors) Cosmos bipinnatus yellow plastic shell (60 Washable Colors) Crape myrtle pink plastic shell (60 Washable Colors)	ND	ND	ND	Pass
No.20	Pale grey plastic shell (60 Washable Colors) Olive green plastic shell (60 Washable Colors) Ochre plastic shell (60 Washable Colors)	ND	ND	ND	Pass
No.21	Blue plastic shell (60 Washable Colors) Flesh plastic shell (60 Washable Colors) Sand red plastic shell (60 Washable Colors)	ND	ND	ND	Pass
No.22	Metallic white plastic shell (60 Washable Colors) Metallic black plastic shell (60 Washable Colors) Metallic red plastic shell (60 Washable Colors)	ND	ND	ND	Pass
No.23	Metallic green plastic shell (60 Washable Colors, 24 Vibrant Colors) Metallic blue plastic shell (60 Washable Colors, 24 Vibrant Colors) Metallic purple plastic shell (60 Washable Colors, 24 Vibrant Colors)	ND	ND	ND	Pass

Test Report

ID: RA0034377(2)

Date: 2023-10-18

Page 40 of 85

Test Item	DIBP	DPENP	DCHP	---
Method Detection Limit (%)	0.003	0.010	0.010	---
16 CFR Part 1307 & Cal. Prop 65 Limits (%)	0.1	0.1	0.1	---
Test Part Description	Result (%)			Comment
No.24 Metallic rose plastic shell (60 Washable Colors, 24 Vibrant Colors) Metallic silvery plastic shell (60 Washable Colors, 24 Vibrant Colors) Metallic golden plastic shell (60 Washable Colors, 24 Vibrant Colors)	ND	ND	ND	Pass
No.25 Metallic brown plastic shell (60 Washable Colors) Metallic light green plastic shell (60 Washable Colors) Metallic yellow plastic shell (60 Washable Colors)	ND	ND	ND	Pass
No.26 Black plastic shell (60 Washable Colors, 14 Global Skin Tones) Dull grey plastic shell (60 Washable Colors, 14 Global Skin Tones) Dull green plastic shell (60 Washable Colors, 14 Global Skin Tones)	ND	ND	ND	Pass
No.27 Brown plastic shell (60 Washable Colors, 14 Global Skin Tones) Grey plastic shell (60 Washable Colors, 14 Global Skin Tones) White plastic shell (24 Vibrant Colors)	ND	ND	ND	Pass



Test Report

ID: RA0034377(2)

Date: 2023-10-18

Page 41 of 85

Test Item	DIBP	DPENP	DCHP	---
Method Detection Limit (%)	0.003	0.010	0.010	---
16 CFR Part 1307 & Cal. Prop 65 Limits (%)	0.1	0.1	0.1	---
Test Part Description	Result (%)			Comment
No.28 Green black soft plastic shell (24 Vibrant Colors) Dark blue soft plastic shell (24 Vibrant Colors) Rose soft plastic shell (24 Vibrant Colors)	ND	ND	ND	Pass
No.29 Purple soft plastic shell (24 Vibrant Colors) Light blue soft plastic shell (24 Vibrant Colors) Light green soft plastic shell (24 Vibrant Colors)	ND	ND	ND	Pass
No.30 Buff soft plastic shell (24 Vibrant Colors) Orange soft plastic shell(24 Vibrant Colors) Red soft plastic shell (24 Vibrant Colors)	ND	ND	ND	Pass
No.31 Black soft plastic shell (24 Vibrant Colors) White soft plastic shell (24 Vibrant Colors) Brown soft plastic shell (24 Vibrant Colors)	ND	ND	ND	Pass
No.32 Fluorescent orange soft plastic shell (24 Vibrant Colors) Fluorescent red soft plastic shell (24 Vibrant Colors) Fluorescent green soft plastic shell (24 Vibrant Colors)	ND	ND	ND	Pass



Test Report

ID: RA0034377(2)

Date: 2023-10-18

Page 42 of 85

Test Item	DIBP	DPENP	DCHP	---
Method Detection Limit (%)	0.003	0.010	0.010	---
16 CFR Part 1307 & Cal. Prop 65 Limits (%)	0.1	0.1	0.1	---
Test Part Description	Result (%)			Comment
No.33 Fluorescent yellow soft plastic shell (24 Vibrant Colors) Fluorescent purple soft plastic shell (24 Vibrant Colors) Fluorescent blue soft plastic shell (24 Vibrant Colors)	ND	ND	ND	Pass
No.34 Metallic green soft plastic shell (24 Vibrant Colors) Metallic blue soft plastic shell (24 Vibrant Colors) Metallic purple soft plastic shell (24 Vibrant Colors)	ND	ND	ND	Pass
No.35 Metallic rose soft plastic shell (24 Vibrant Colors) Metallic silvery soft plastic shell (24 Vibrant Colors) Metallic golden soft plastic shell (24 Vibrant Colors)	ND	ND	ND	Pass
No.36 Coffee solid tempera paint (14 Global Skin Tones) Dark coffee solid tempera paint (14 Global Skin Tones) Brown solid tempera paint (14 Global Skin Tones)	ND	ND	ND	Pass
No.37 Light brown solid tempera paint (14 Global Skin Tones) Dark brown solid tempera paint (14 Global Skin Tones) Light coffee solid tempera paint (14 Global Skin Tones)	ND	ND	ND	Pass



Test Report

ID: RA0034377(2)

Date: 2023-10-18

Page 43 of 85

Test Item	DIBP	DPENP	DCHP	---
Method Detection Limit (%)	0.003	0.010	0.010	---
16 CFR Part 1307 & Cal. Prop 65 Limits (%)	0.1	0.1	0.1	---
Test Part Description	Result (%)			Comment
No.38 Dark apricot solid tempera paint (14 Global Skin Tones) Apricot solid tempera paint (14 Global Skin Tones) Dark wheat solid tempera paint (14 Global Skin Tones)	ND	ND	ND	Pass
No.39 Wheat solid tempera paint (14 Global Skin Tones) Bright apricot solid tempera paint (14 Global Skin Tones) Light apricot solid tempera paint (14 Global Skin Tones)	ND	ND	ND	Pass
No.40 Pale yellow solid tempera paint (14 Global Skin Tones) Light pale yellow solid tempera paint (14 Global Skin Tones)	ND	ND	ND	Pass
No.41 Prussian blue solid tempera paint (60 Washable Colors) Light yellow solid tempera paint (60 Washable Colors) Green black solid tempera paint (60 Washable Colors, 24 Vibrant Colors)	ND	ND	ND	Pass
No.42 Dark blue solid tempera paint (60 Washable Colors, 24 Vibrant Colors) Rose solid tempera paint (60 Washable Colors, 24 Vibrant Colors) Purple solid tempera paint (60 Washable Colors, 24 Vibrant Colors)	ND	ND	ND	Pass



Test Report

ID: RA0034377(2)

Date: 2023-10-18

Page 44 of 85

Test Item	DIBP	DPENP	DCHP	---
Method Detection Limit (%)	0.003	0.010	0.010	---
16 CFR Part 1307 & Cal. Prop 65 Limits (%)	0.1	0.1	0.1	---
Test Part Description	Result (%)			Comment
No.43 Light blue solid tempera paint (60 Washable Colors, 24 Vibrant Colors) Light green solid tempera paint (60 Washable Colors, 24 Vibrant Colors) Buff solid tempera paint (60 Washable Colors, 24 Vibrant Colors)	ND	ND	ND	Pass
No.44 Yellow solid tempera paint (60 Washable Colors) Orange solid tempera paint (60 Washable Colors, 24 Vibrant Colors) Red solid tempera paint (60 Washable Colors, 24 Vibrant Colors)	ND	ND	ND	Pass
No.45 Black solid tempera paint (60 Washable Colors, 24 Vibrant Colors) White solid tempera paint (60 Washable Colors, 24 Vibrant Colors) Brown solid tempera paint (60 Washable Colors, 24 Vibrant Colors)	ND	ND	ND	Pass
No.46 Pale purple solid tempera paint (60 Washable Colors) Earth yellow solid tempera paint (60 Washable Colors) Orange-yellow solid tempera paint (60 Washable Colors)	ND	ND	ND	Pass
No.47 Lake blue solid tempera paint (60 Washable Colors) Grass green solid tempera paint (60 Washable Colors) Dark green solid tempera paint (60 Washable Colors)	ND	ND	ND	Pass



Test Report

ID: RA0034377(2)

Date: 2023-10-18

Page 45 of 85

Test Item	DIBP	DPENP	DCHP	---
Method Detection Limit (%)	0.003	0.010	0.010	---
16 CFR Part 1307 & Cal. Prop 65 Limits (%)	0.1	0.1	0.1	---
Test Part Description	Result (%)			Comment
No.48 Rose-bengal solid tempera paint (60 Washable Colors) Dark red solid tempera paint (60 Washable Colors) Turquoise solid tempera paint (60 Washable Colors)	ND	ND	ND	Pass
No.49 Fluorescent orange solid tempera paint (60 Washable Colors, 24 Vibrant Colors) Fluorescent red solid tempera paint (60 Washable Colors, 24 Vibrant Colors) Fluorescent green solid tempera paint (60 Washable Colors, 24 Vibrant Colors)	ND	ND	ND	Pass
No.50 Fluorescent yellow solid tempera paint (60 Washable Colors, 24 Vibrant Colors) Fluorescent purple solid tempera paint (60 Washable Colors, 24 Vibrant Colors) Fluorescent blue solid tempera paint (60 Washable Colors, 24 Vibrant Colors)	ND	ND	ND	Pass
No.51 Sky blue solid tempera paint (60 Washable Colors) White yellow solid tempera paint (60 Washable Colors) Light purple solid tempera paint (60 Washable Colors)	ND	ND	ND	Pass



Test Report

ID: RA0034377(2)

Date: 2023-10-18

Page 46 of 85

Test Item	DIBP	DPENP	DCHP	---
Method Detection Limit (%)	0.003	0.010	0.010	---
16 CFR Part 1307 & Cal. Prop 65 Limits (%)	0.1	0.1	0.1	---
Test Part Description	Result (%)			Comment
No.52 Grayish purple solid tempera paint (60 Washable Colors) Cadet gray solid tempera paint (60 Washable Colors) Soft green solid tempera paint (60 Washable Colors)	ND	ND	ND	Pass
No.53 Light grayish blue solid tempera paint (60 Washable Colors) Apple green solid tempera paint (60 Washable Colors) Pea green solid tempera paint (60 Washable Colors)	ND	ND	ND	Pass
No.54 Napoli yellow solid tempera paint (60 Washable Colors) Cosmos bipinnatus yellow solid tempera paint (60 Washable Colors) Crape myrtle pink solid tempera paint (60 Washable Colors)	ND	ND	ND	Pass
No.55 Pale grey solid tempera paint (60 Washable Colors) Olive green solid tempera paint (60 Washable Colors) Ochre solid tempera paint (60 Washable Colors)	ND	ND	ND	Pass
No.56 Blue solid tempera paint (60 Washable Colors) Flesh solid tempera paint (60 Washable Colors) Sand red solid tempera paint (60 Washable Colors)	ND	ND	ND	Pass



Test Report

ID: RA0034377(2)

Date: 2023-10-18

Page 47 of 85

Test Item	DIBP	DPENP	DCHP	---
Method Detection Limit (%)	0.003	0.010	0.010	---
16 CFR Part 1307 & Cal. Prop 65 Limits (%)	0.1	0.1	0.1	---
Test Part Description	Result (%)			Comment
No.57 Metallic white solid tempera paint (60 Washable Colors) Metallic black solid tempera paint (60 Washable Colors) Metallic red solid tempera paint (60 Washable Colors)	ND	ND	ND	Pass
No.58 Metallic green solid tempera paint (60 Washable Colors, 24 Vibrant Colors) Metallic blue solid tempera paint (60 Washable Colors, 24 Vibrant Colors) Metallic purple solid tempera paint (60 Washable Colors, 24 Vibrant Colors)	ND	ND	ND	Pass
No.59 Metallic rose solid tempera paint (60 Washable Colors, 24 Vibrant Colors) Metallic silvery solid tempera paint (60 Washable Colors, 24 Vibrant Colors) Metallic golden solid tempera paint (60 Washable Colors, 24 Vibrant Colors)	ND	ND	ND	Pass
No.60 Metallic brown solid tempera paint (60 Washable Colors) Metallic light green solid tempera paint (60 Washable Colors) Metallic yellow solid tempera paint (60 Washable Colors)	ND	ND	ND	Pass

Test Report

ID: RA0034377(2)

Date: 2023-10-18

Page 48 of 85

Test Item	DIBP	DPENP	DCHP	---
Method Detection Limit (%)	0.003	0.010	0.010	---
16 CFR Part 1307 & Cal. Prop 65 Limits (%)	0.1	0.1	0.1	---
Test Part Description	Result (%)			Comment
No.61 Silvery coating on plastic (14 Global Skin Tones, 60 Washable Colors, 24 Vibrant Colors) Black coating on plastic (14 Global Skin Tones, 60 Washable Colors)	ND	ND	ND	Pass

- Note:
1. % = Percentage by weight (w/w)
 2. 0.1% = 1000ppm (mg/kg)
 3. ND = Not detected (<Method detection limit)

I) Toxic Elements in Packaging Materials

Wet acid digestion and EPA 3052:1996, analysis was performed by Inductively Coupled Plasma Optima Emission Spectrometer (ICP-OES).

Test Item	Cd	Pb	Hg	Cr(VI)*	Total [Pb + Cd + Hg + Cr(VI)]	---
Method Detection Limit (mg/kg)	2	2	2	10	---	---
Permissible Limit (mg/kg)	---	---	---	---	100	---
Test Part Description	Result (mg/kg)					Comment
No.1 Transparent plastic shrink wrap (14 Global Skin Tones, 60 Washable Colors) Transparent plastic sheet with glue (14 Global Skin Tones, 60 Washable Colors, 24 Vibrant Colors)	ND	4.2	ND	ND	4.2	Pass
No.2 White plastic tray (14 Global Skin Tones, 60 Washable Colors) Transparent plastic film with inaccessible coating (14 Global Skin Tones, 60 Washable Colors, 24 Vibrant Colors) Transparent plastic tray (24 Vibrant Colors)	ND	3.6	ND	ND	3.6	Pass





Test Report

ID: RA0034377(2)

Date: 2023-10-18

Page 49 of 85

Test Item	Cd	Pb	Hg	Cr(VI)*	Total [Pb + Cd + Hg + Cr(VI)]	---
Method Detection Limit (mg/kg)	2	2	2	10	---	---
Permissible Limit (mg/kg)	---	---	---	---	100	---
Test Part Description	Result (mg/kg)					Comment
No.3 White paper excluded coating(14 Global Skin Tones, 60 Washable Colors) Grey paper with glue (14 Global Skin Tones, 60 Washable Colors) White paper sheet coating (24 Vibrant Colors)	ND	3.0	ND	ND	3.0	Pass

- Note:
1. mg/kg = Milligram per kilogram = ppm
 2. ND = Not detected (<Method detection limit)
 3. * = The substance is calculated by the result of Chromium element

The test result of the report is related to the item being tested only. UTL does not verify or be liable to any declare or declaration if the particular/specific item is not tested.

Decision rule was applied with reference to CNAS-GL015 : 2018 Guidelines on Stating Test or Calibration Results and Compliance with Specification.





Test Report

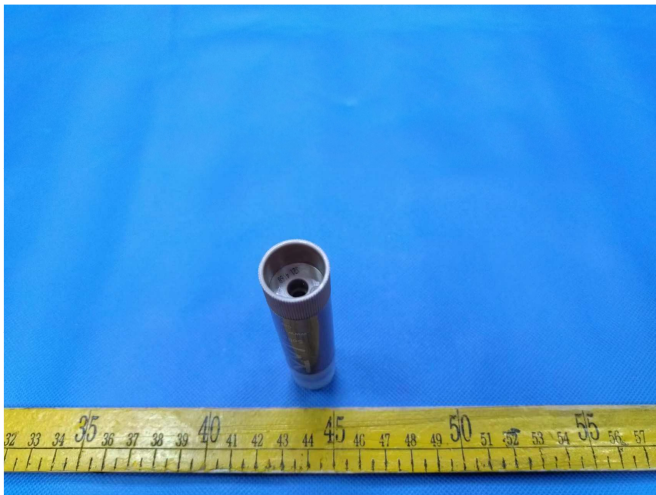
ID: RA0034377(2)

Date: 2023-10-18

Page 50 of 85

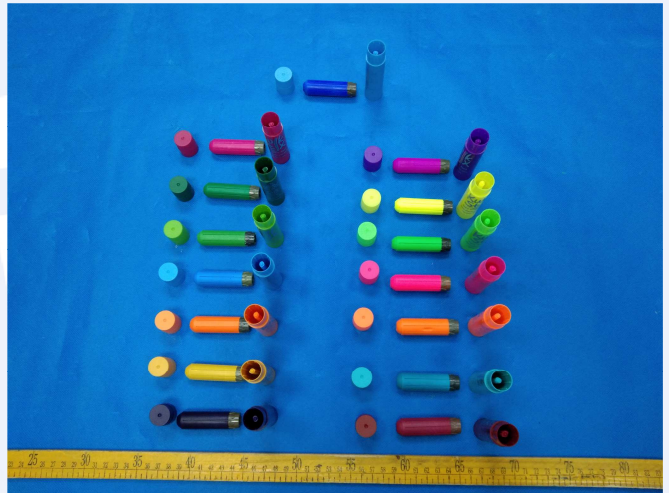
Photo(s)

Solid Tempera Paint (14 Global Skin Tones)

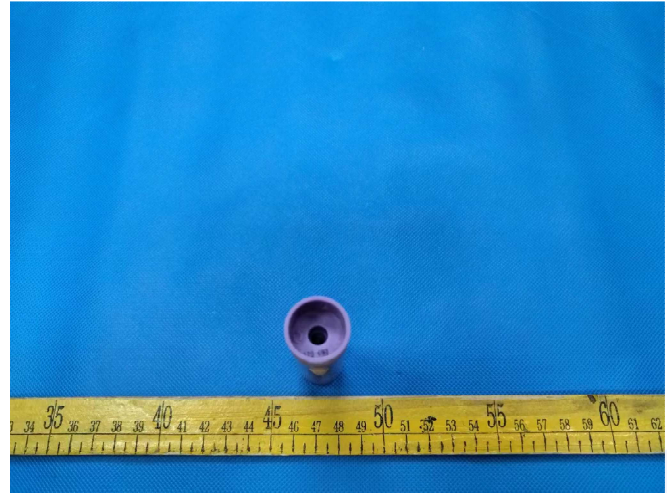


Photo(s):

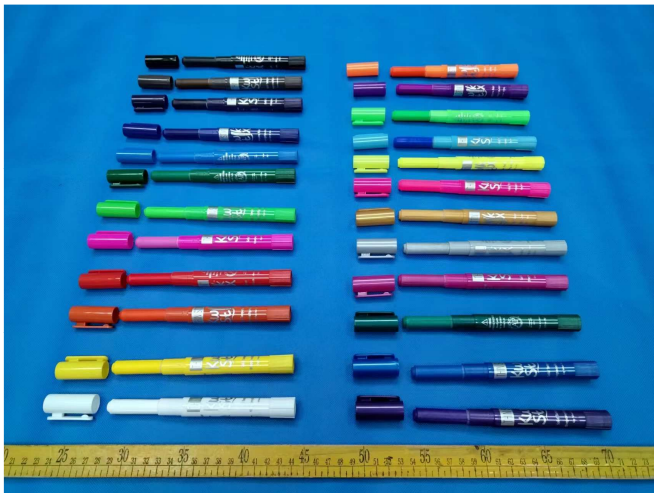
Solid Tempera Paint (60 Washable Colors)



Photo(s):



Solid Tempera Paint (24 Vibrant Colors)





Photo(s):

TPG-601



106x148x25mm 2021.4.27





Photo(s):

TPG-613



106x148x25mm 2021.4.27

SILVER FOIL





Photo(s):

TPG-610



106x148x25mm 2021.4.27





Photo(s):

TPG-676



106x148x25mm 2021.4.27

PMS 5763





Photo(s):

TPG-678



106x227x24mm 2021.4.27

PMS 3272





Photo(s):

TPG-680



106x227x24mm 2021.4.27

PMS 2577





Photo(s):

TPG-602



106x26x275mm 2021.4.27





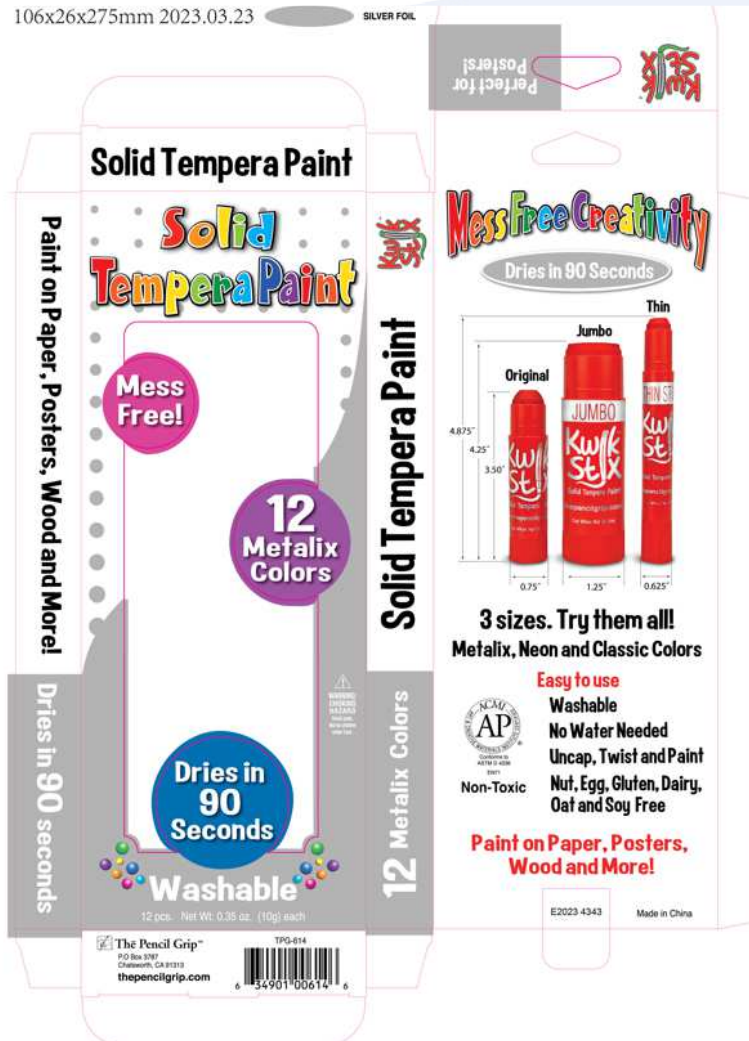
Photo(s):

TPG-614



106x26x275mm 2023.03.23

SILVER FOIL





Photo(s):

TPG-604



Photo(s):

TPG-681





Photo(s):

TPG-690



Photo(s):

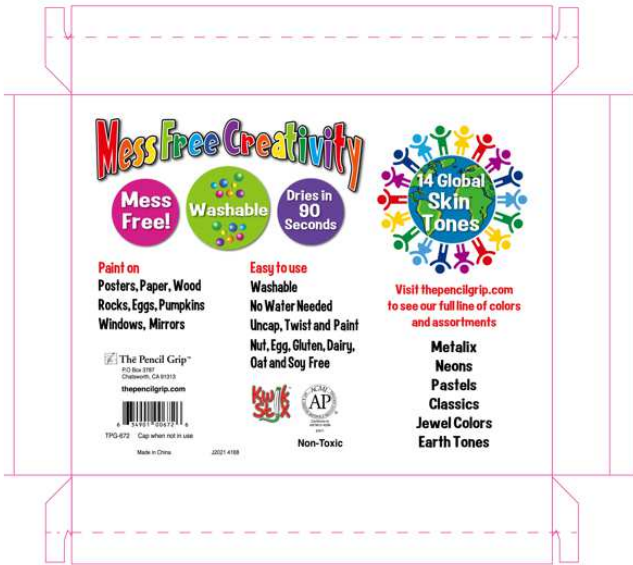
TPG-672



215x170x25mm

2021.9.15

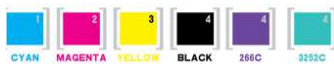
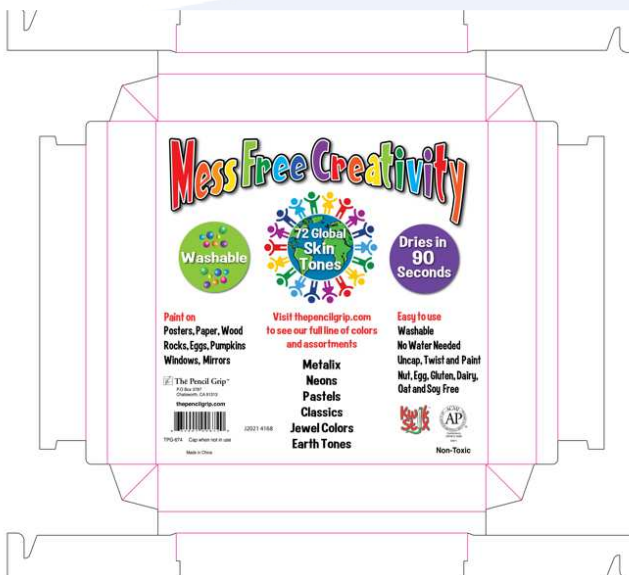
221x176x25mm





Photo(s):

TPG-674



XDWJ1251 10克蜡笔12色72支盒



Photo(s):

TPG-626



XDWJ718-阿色 10克72支盒 盖 货号 : TPG-626-322x242x65mm-20210515
300G灰 E瓦 C M Y K 802C



Photo(s):

TPG-629



XDWJ719-阿色 10克72支盒 盖 货号 : TPG-629-322x242x65mm-20210615

300G灰 瓦 C M Y K 烫银





Photo(s):

TPG-696





Photo(s):

TPG-644





Photo(s):

TPG-60010



84x62x90mm 2022.07.14



Solid Tempera Paint



Mess Free Creativity

Easy to use
No Water Needed
Uncap, Twist and Paint
Nut, Egg, Gluten, Dairy,
Oat and Soy Free

Full range of colors and sets available:
Metalix, Neon, Primary,
Pastels, Earth Tones, Jewel Tones

The Pencil Grip™ G2022 4264 TPG-60010
P.O. Box 3787
Chatsworth, CA 91313
thepencilgrip.com

Contains 12 Black Kwik Stix
Mess Free!
Dries in 90 Seconds
Solid Tempera Paint
Paint on Paper, Posters,
Wood and More!
thepencilgrip.com



Contains 12 Black Kwik Stix
Dries in 90 Seconds
Mess Free!
Solid Tempera Paint
Paint on Paper, Posters,
Wood and More!
thepencilgrip.com



Photo(s):

TPG-60020



84x62x90mm 2022.07.14





Photo(s):

TPG-60030



84x62x90mm 2022.07.14





Photo(s):

TPG-60040



83x62x91mm 2023.03.02 PANTONE 300 C





Photo(s):

TPG-60050





Photo(s):

TPG-60070



83x62x91mm 2023.03.02 PANTONE 300 C





Photo(s):

TPG-60080



83x62x91mm 2023.03.02 PANTONE 300 C





Photo(s):

TPG-60090



83x62x91mm 2023.03.02 PANTONE 300 C





Photo(s):

TPG-60060



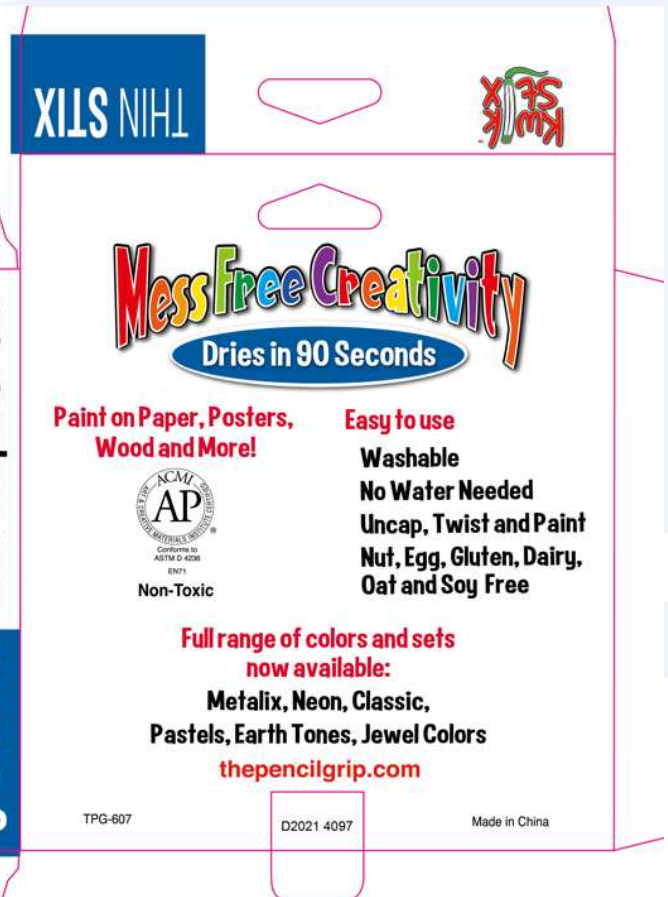


Photo(s):

TPG-607



TPG-607 159x19x156 2021.3.23





Photo(s):

TPG-619



159x19x156mm 2022.10.17





Photo(s):

TPG-616



TPG-616 159x19x156 2021.3.23



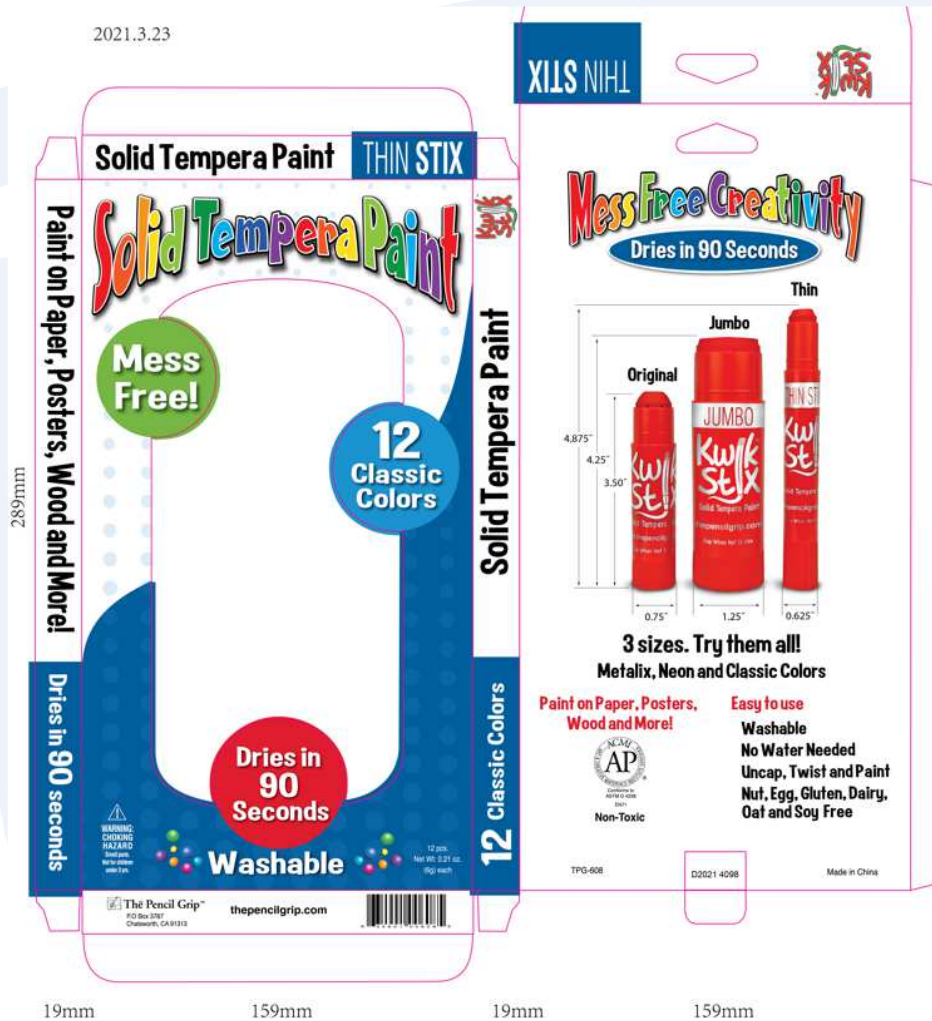


Photo(s):

TPG-608



2021.3.23





Photo(s):

TPG-620



Photo(s):

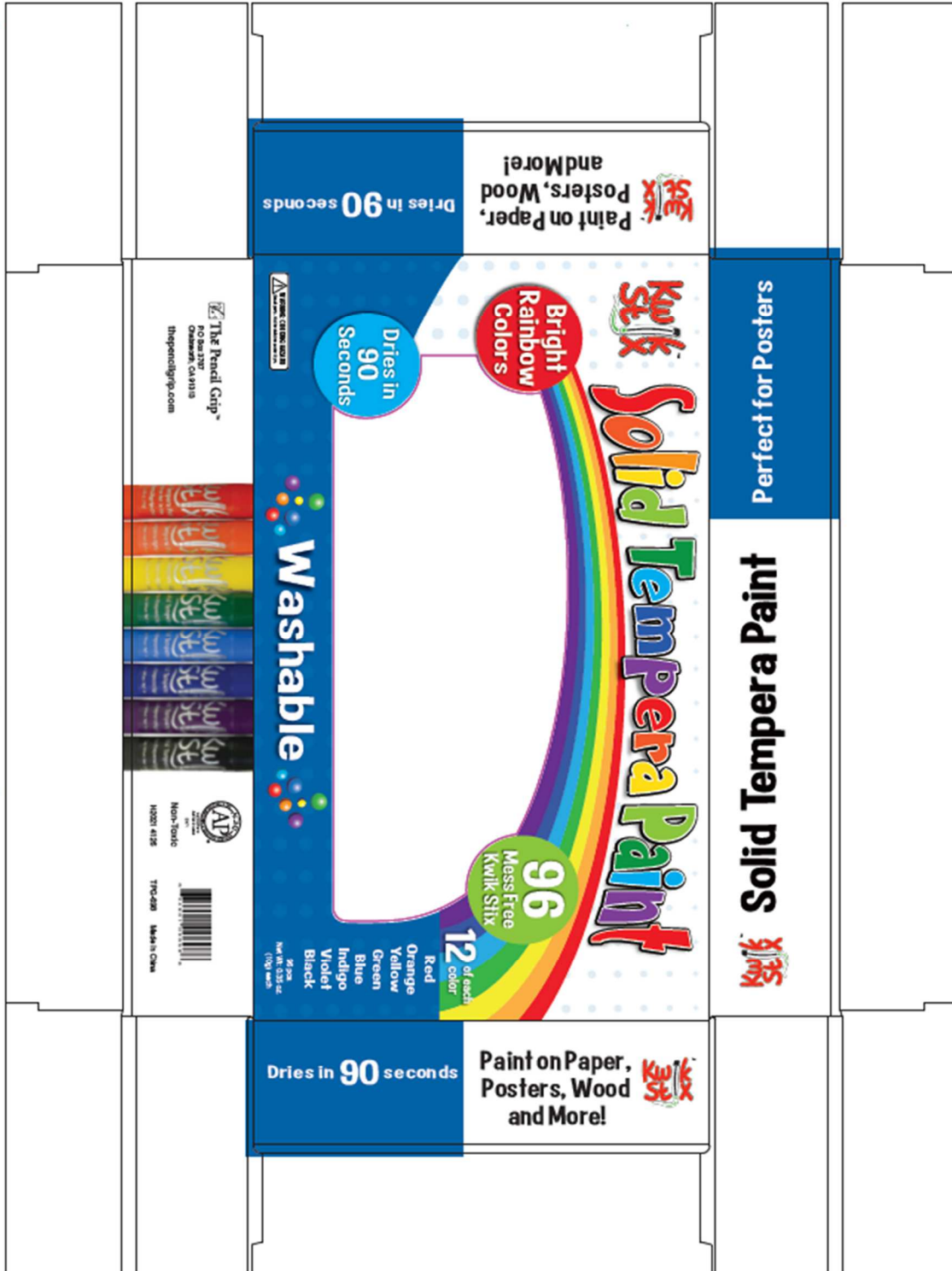
TPG-699





Photo(s):

TPG-698



*** End of Report ***

